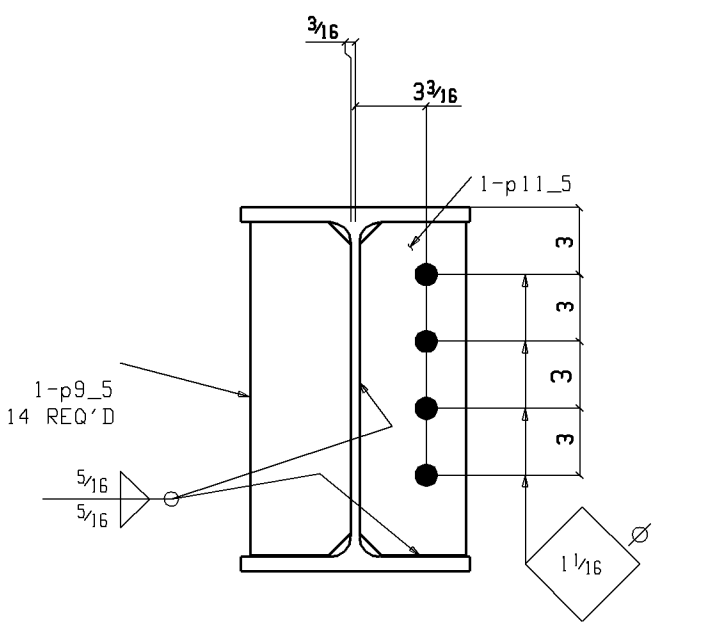
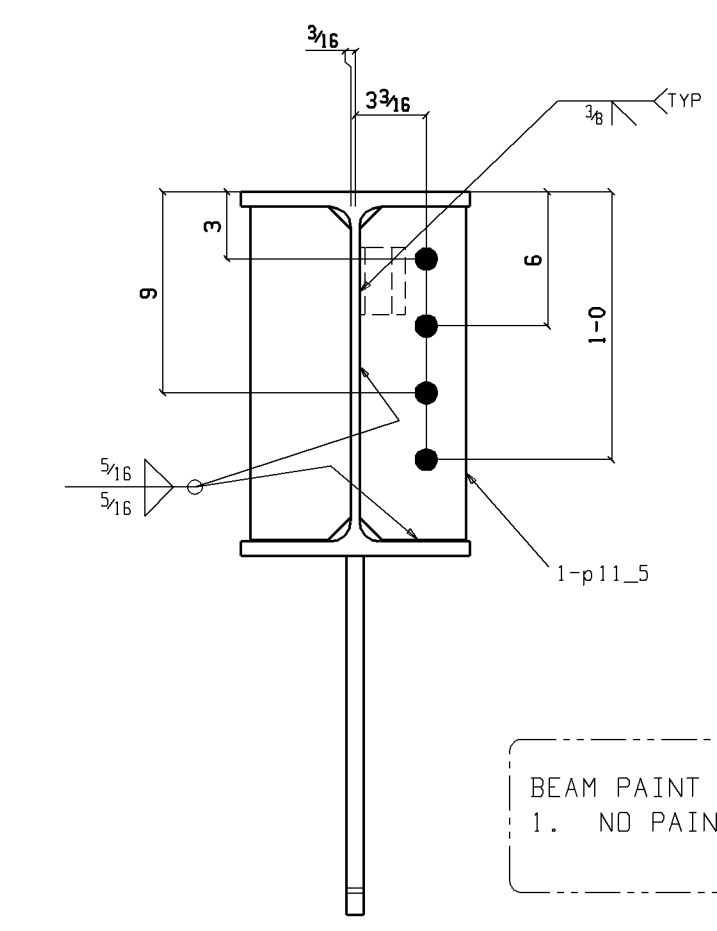


Section A-A
5-1B1

ONE BEAM 5-1B1
W16x40
F7x1/2



Section B-B
5-1B2



Section A-A
5-1B2

BEAM PAINT NOTE:
1. NO PAINT ON GUSSETS

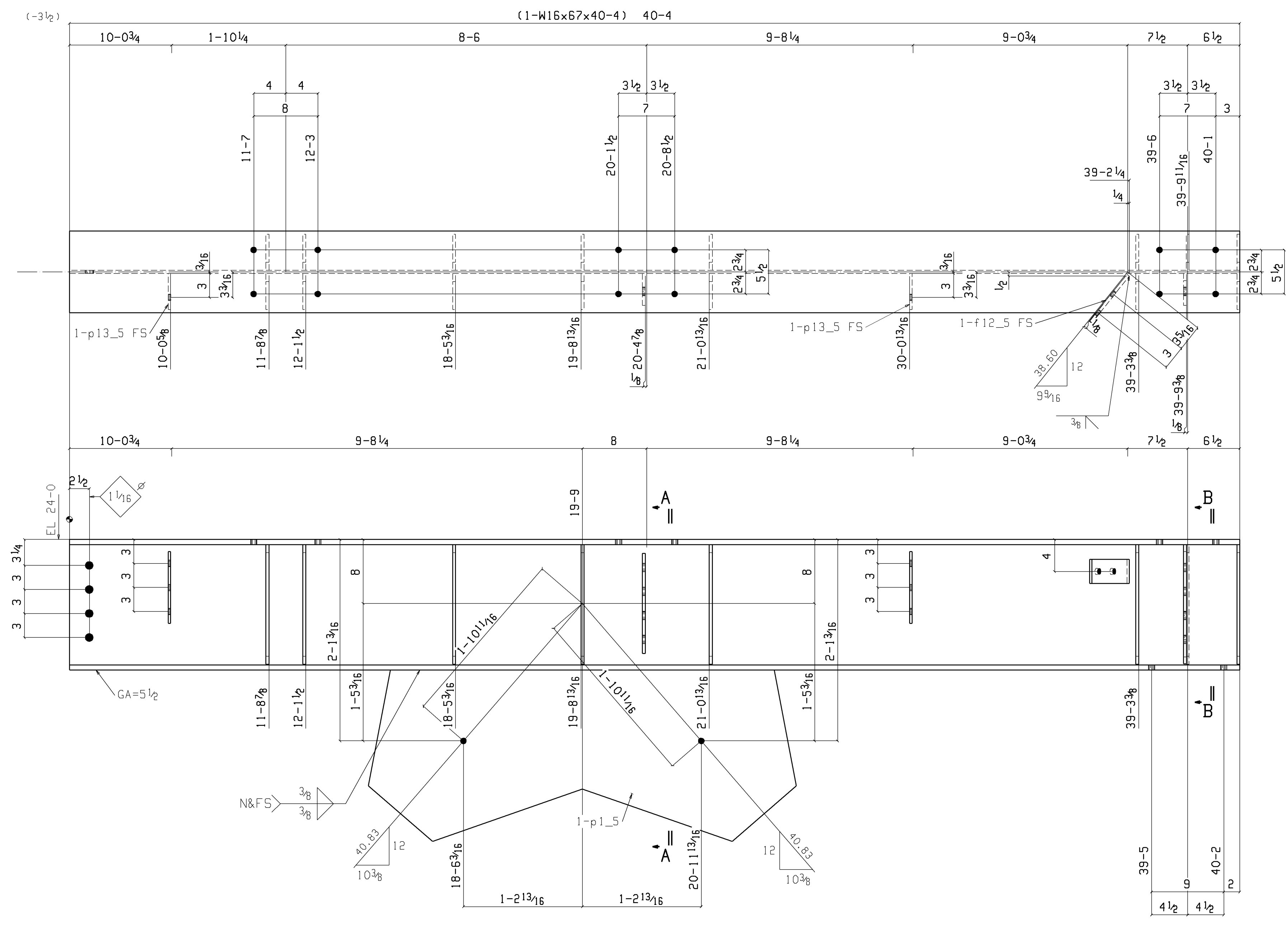
BILL OF MATERIAL

QTY	SHIP	QTY	DESCRIPTION	LENTH	REMARKS	HEIGHT	
Total	MARK	Unit				Unit	
ONE	5-1B1	1	BEAM			1250	
1	5-1B1	1	W16x40	26	4 1/2	A992	1055
1	p5_5	1	PL3/8x21 1/2	3	4 1/2	A36	163
1	p6_5	1	PL3/8x4 1/2	1	2 1/2	A36	7
5	f1_5	5	FL3/8x3	1	2 1/2	A36	5
			FIELD BOLTS				
8		1	Dia A325N	0	2 1/4	IHD WASH	
ONE	5-1B2	1	BEAM			2862	
1	5-1B2	1	W16x67	39	4 1/2	A992	2638
1	p3_5	1	PL3/8x21 1/2	4	4 1/2	A36	195
2	p11_5	2	PL3/8x4 3/4	1	2 1/2	A36	8
14	p9_5	14	PL3/8x4 1/2	1	2 1/2	A36	7
1	f9_5	1	FL3/8x3	0	7 1/2	A36	2
2	f12_5	2	FL3/8x3	0	7 1/2	A36	2
2	p13_5	2	PL5/8x4 1/2	0	9	A36	4
			FIELD BOLTS				
4		1	Dia A325N	0	2 1/4	IHD WASH	
16		3/4	Dia A325N	0	2 1/4	IHD WASH	

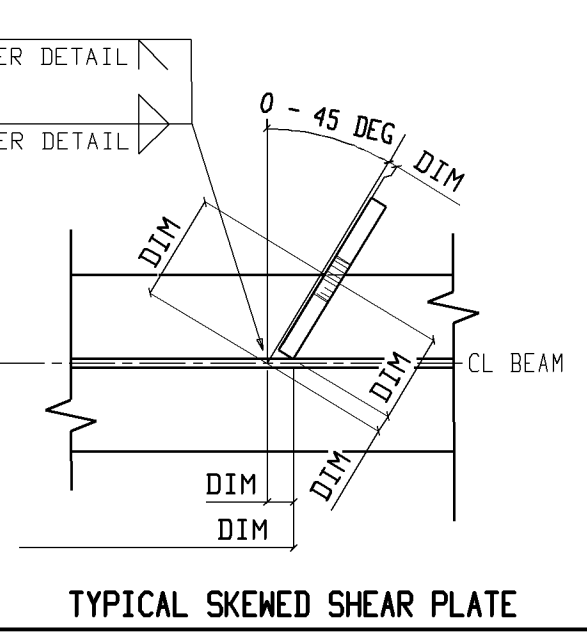
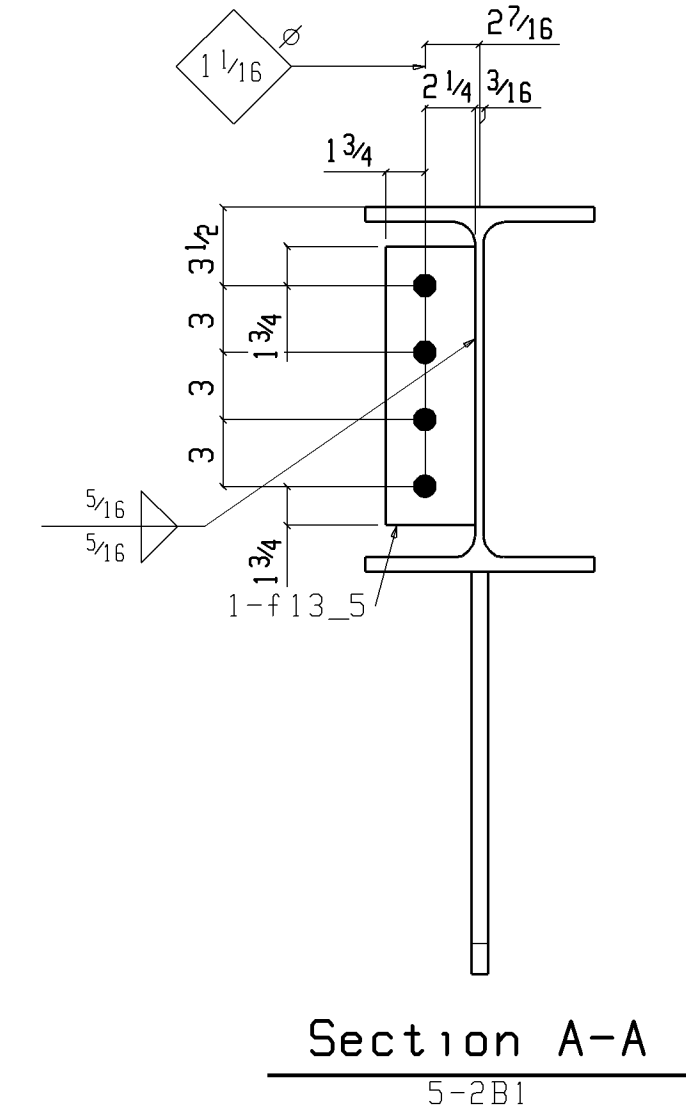
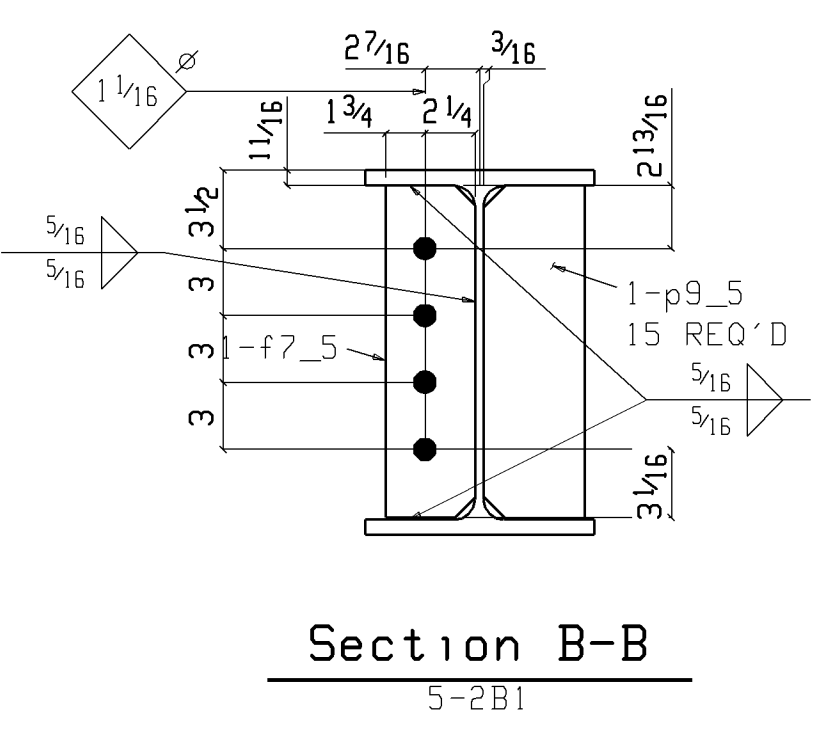
Total weight : 4212

TYPICAL SKENED SHEAR PLATE

ONE BEAM 5-1B2
W16x54
F10 1/4x1 1/2



ONE BEAM 5-2B1
 W | 16 3/16 x 3 3/8
 F | 10 1/4 x 1 1/16

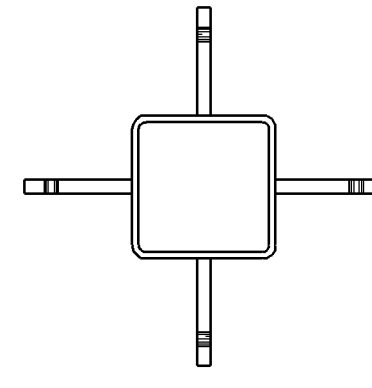
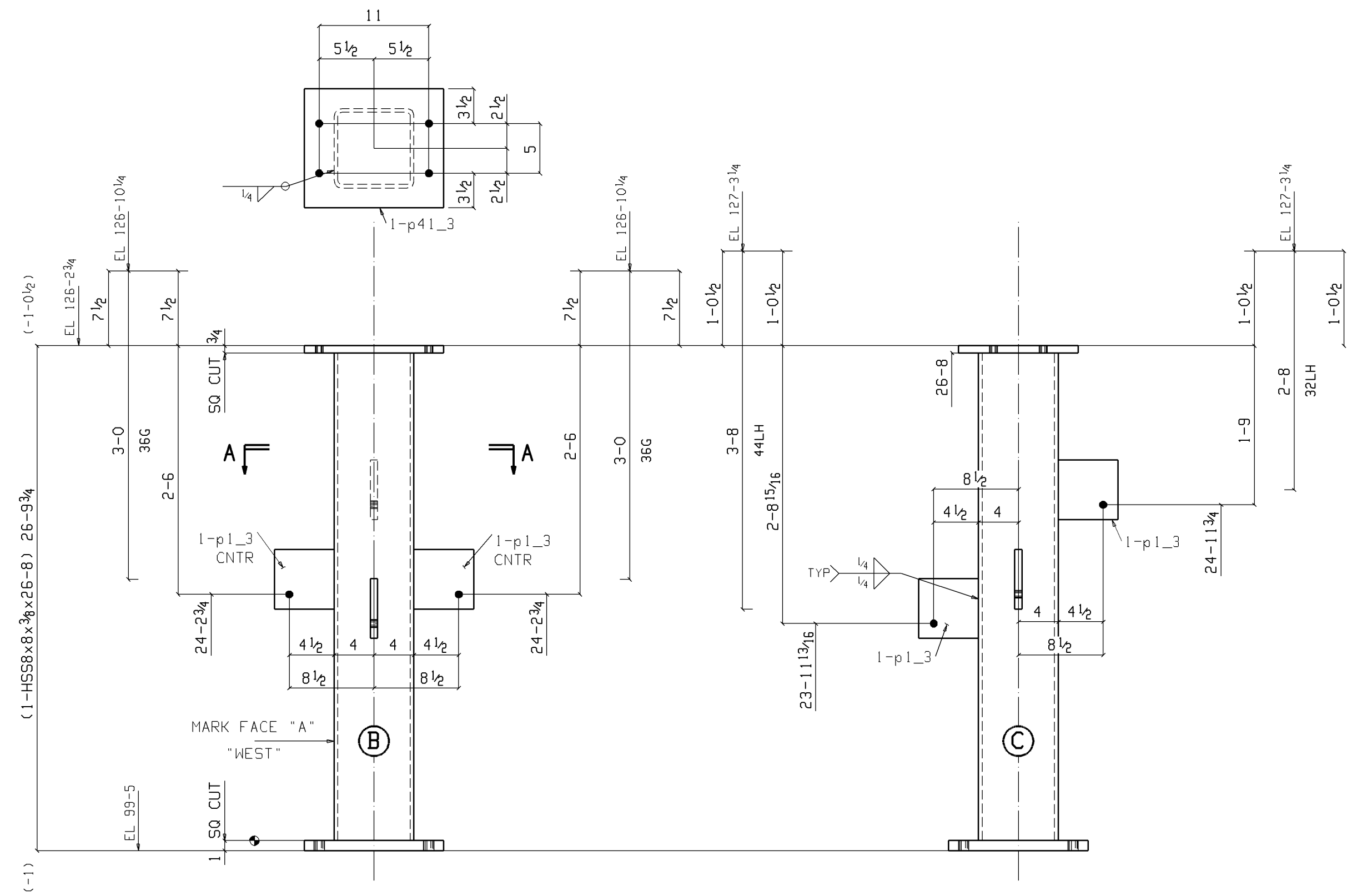


BEAM PAINT NOTE:
 1. NO PAINT ON GUSSETS

BILL OF MATERIAL

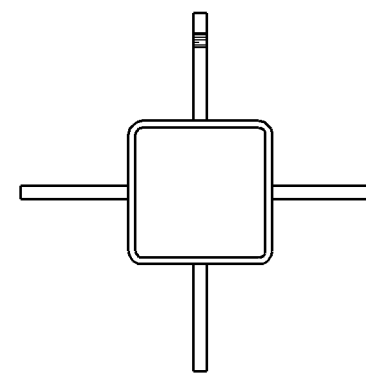
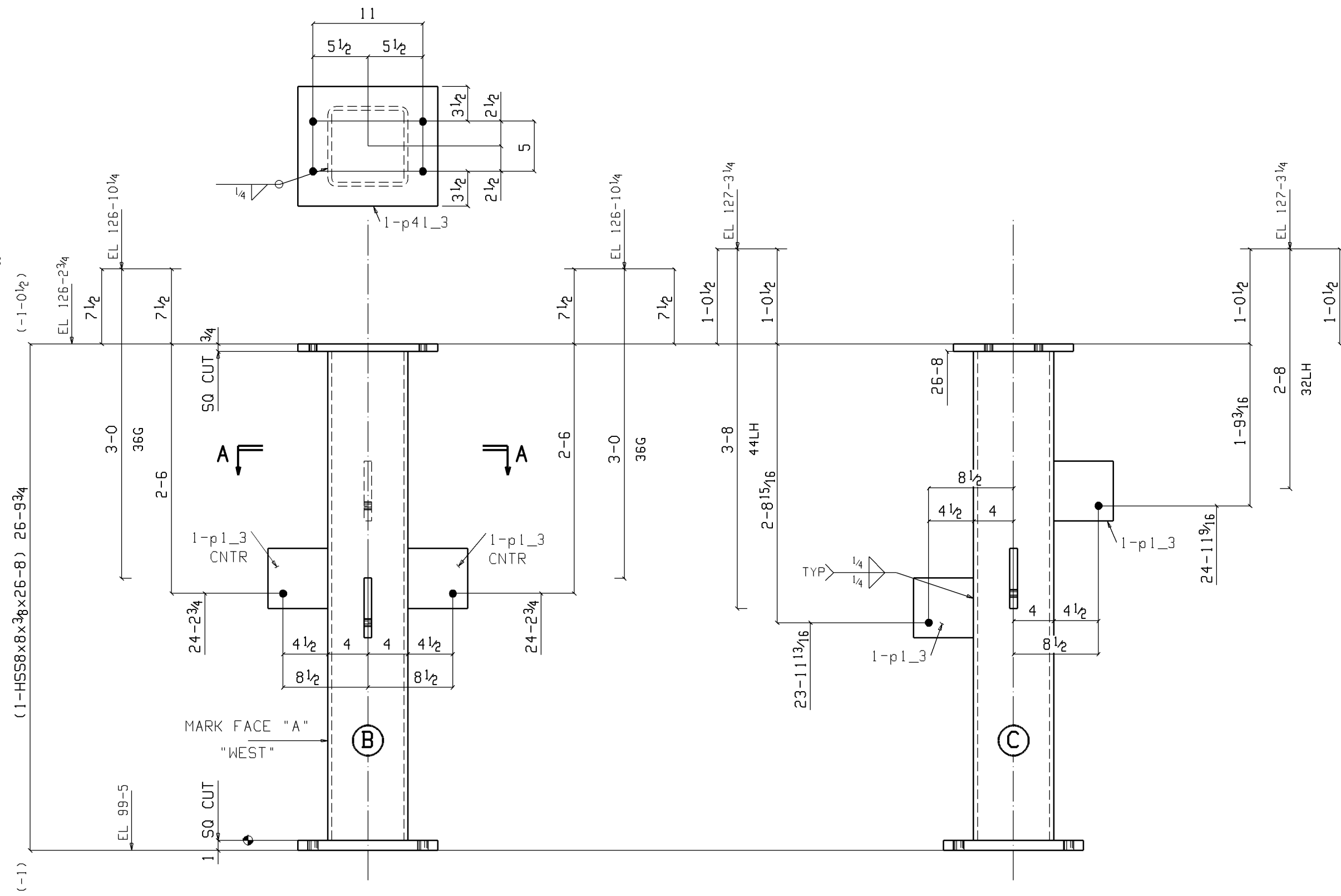
QTY	SHIP	QTY	DESCRIPTION	LENTH	REMARKS	HEIGHT	
Total	MARK	Unit				Unit	
ONE	5-2B1	1	BEAM			3027	
1	5-2B1	1	W16x67	40	4	A992	2702
1	p1_5	1	PL 3/8 x 2 1/8	4	5 3/8	A36	197
15	p9_5	15	PL 3/8 x 4 1/2	1	2 15/16	A36	7
1	f7_5	1	FL 3/8 x 4	1	2 3/8	A36	6
1	f13_5	1	FL 3/8 x 4	1	0 1/2	A36	5
1	f12_5	1	FL 3/8 x 3	0	7 1/2	A36	2
2	p13_5	2	PL 3/8 x 4 1/2	0	9	A36	4
FIELD BOLTS							
4		1	Dia A325N	0	2 1/4	1HD WASH	
16		3/4	Dia A325N	0	2 1/4	1HD WASH	

Total weight : 3027



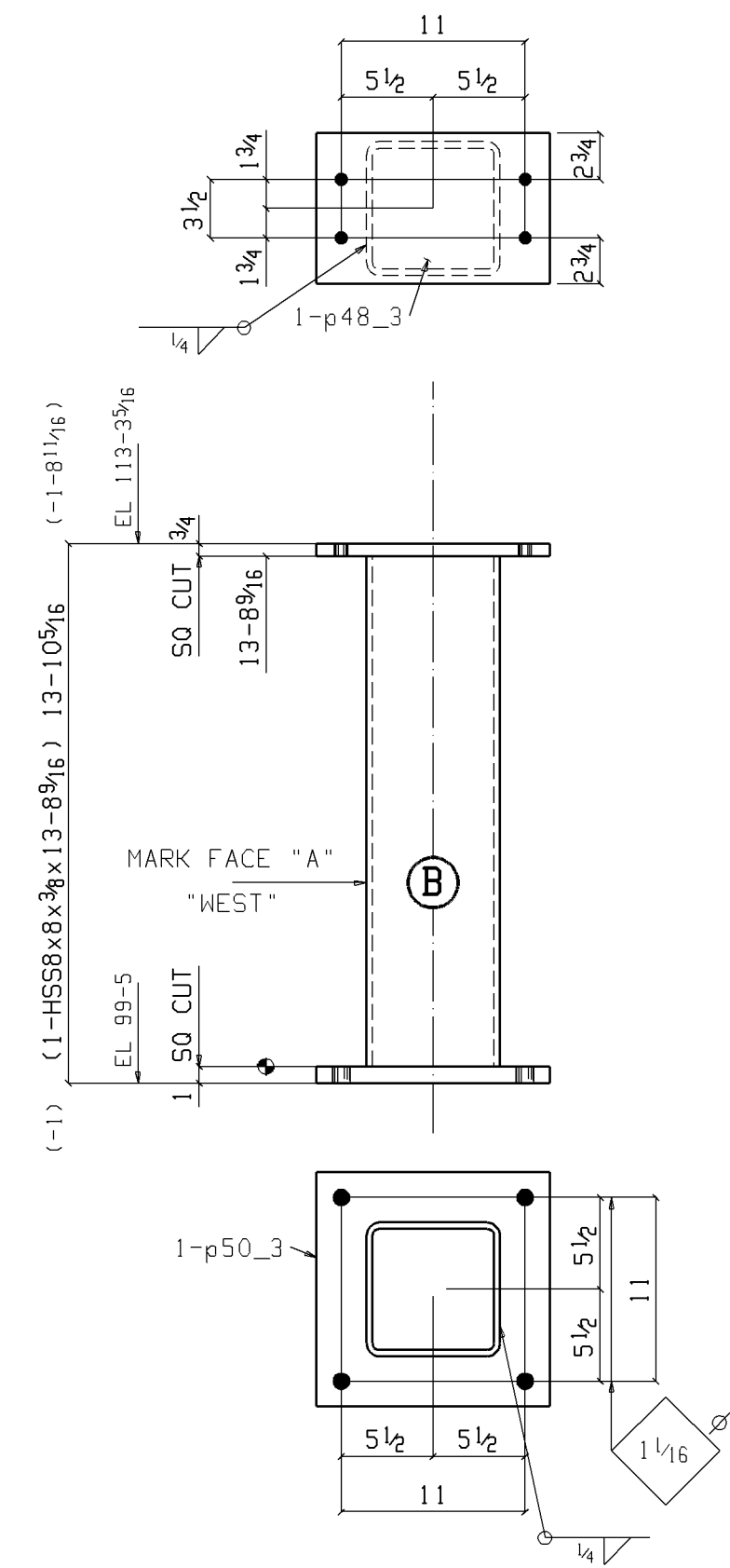
Section A-A
3-6C1

3 COLUMNS 3-6C1



Section A-A
3-6C2

2 COLUMNS 3-6C2



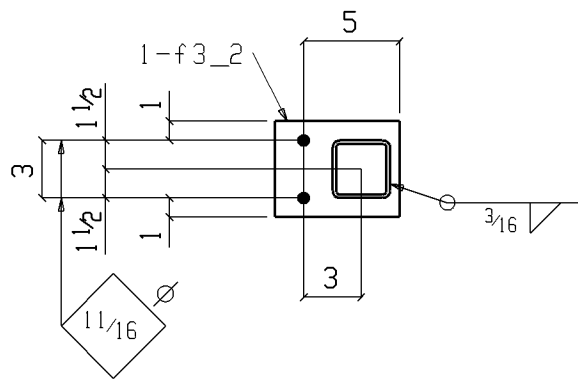
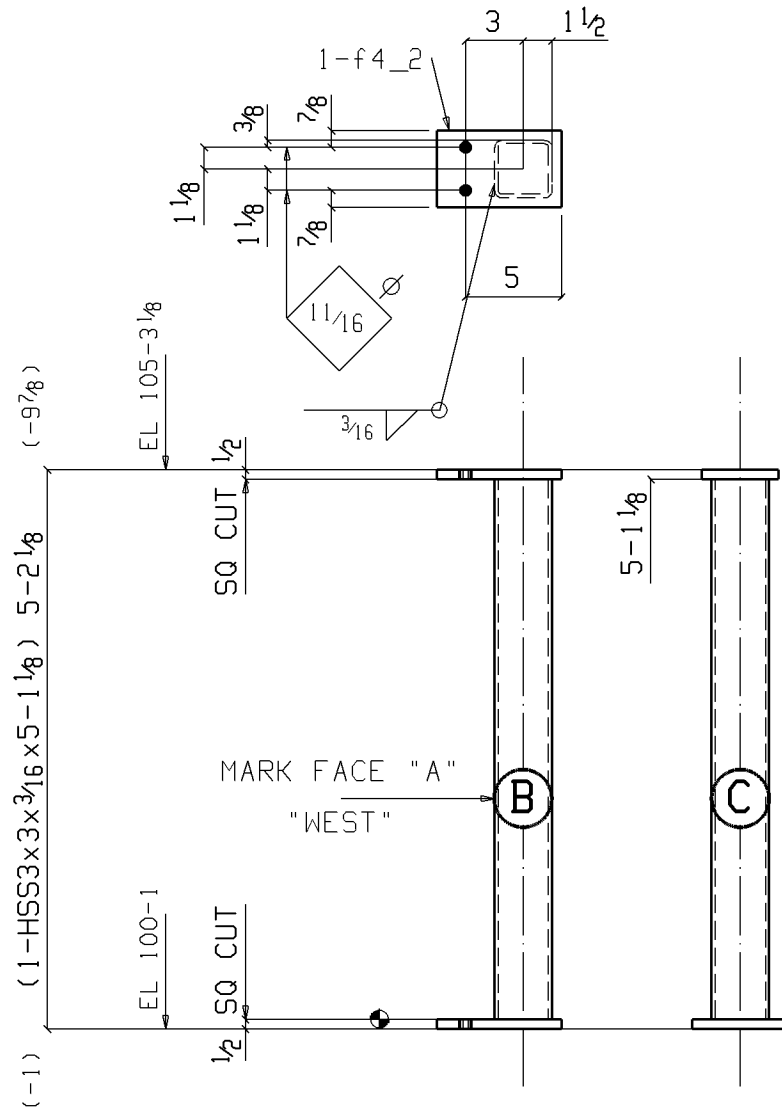
ONE COLUMN 3-6C3

BILL OF MATERIAL

QTY	Piece	QTY	Description	Length	Remarks	Weight
total	Mark	unit				Unit
3	3-6C1		COLUMN			1127
3	3-6C1	1	HSS8x8x3/8	26 8	S2E A500B	1005
3	p50_3	1	PL1x14	1 2	A36	56
3	p41_3	1	PL3/4x12	1 2	A36	36
12	p1_3	4	PL3/4x6	0 6	A36	8
2	3-6C2		COLUMN			1127
2	3-6C2	1	HSS8x8x3/8	26 8	S2E A500B	1005
2	p50_3	1	PL1x14	1 2	A36	56
2	p41_3	1	PL3/4x12	1 2	A36	36
8	p1_3	4	PL3/4x6	0 6	A36	8
ONE	3-6C3		COLUMN			599
1	3-6C3	1	HSS8x8x3/8	13 8 5/16	S2E A500B	517
1	p50_3	1	PL1x14	1 2	A36	56
1	p48_3	1	PL3/4x9	1 2	A36	27
Total weight :						6234

FOR PRODUCTION 10-3-06
FOR APPROVAL 9-13-06

SHOP NOTE:
1. NO PAINT 3" AROUND HOLES/SLOTS AND IN BETWEEN.
2. NO PAINT ON GUSSETS.
3. NO PAINT BOTTOM 5" OF COLUMNS



ONE COLUMN 2C4

FOR PRODUCTION 10-24-06
FOR APPROVAL 10-4-06

BILL OF MATERIAL

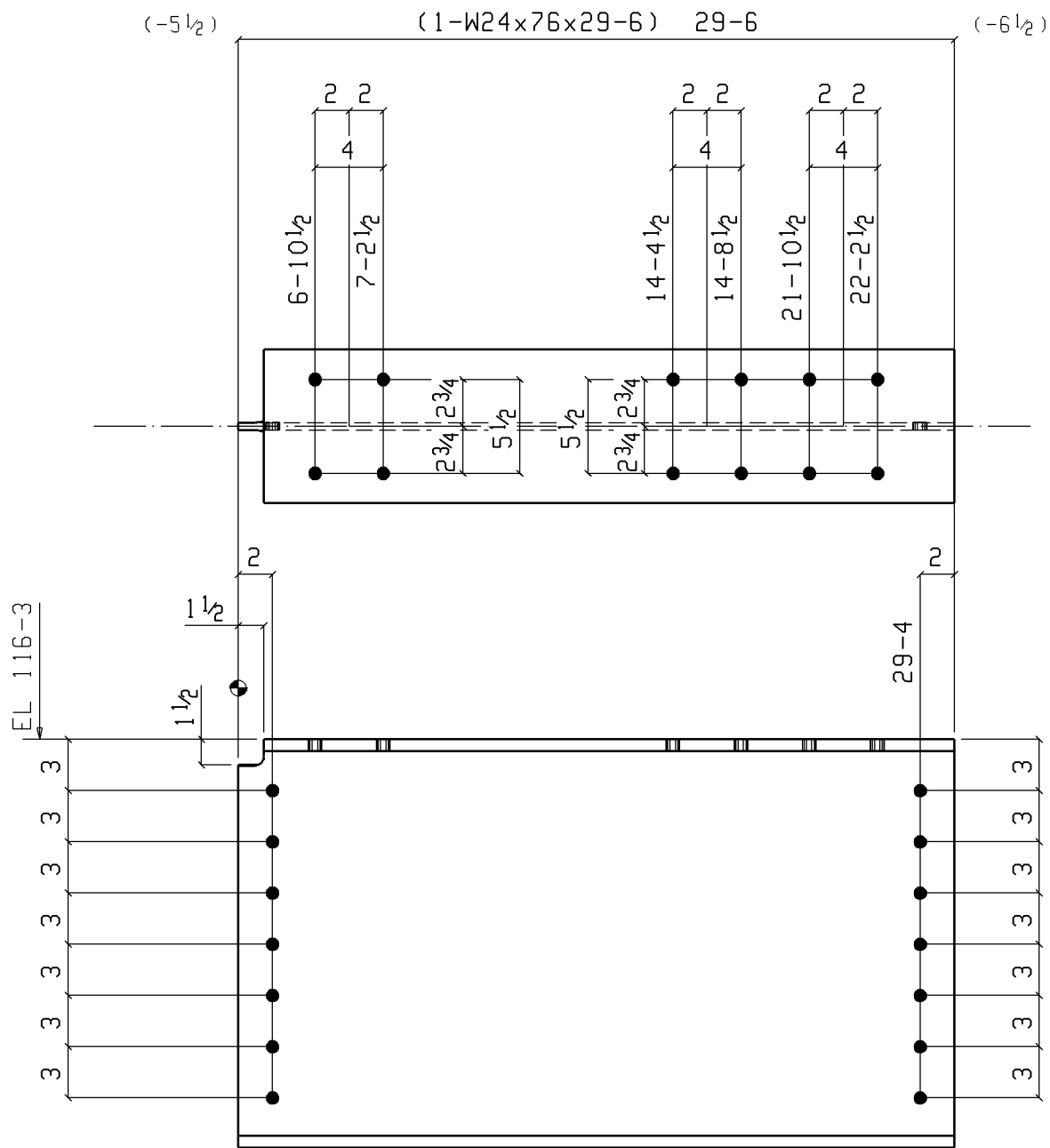
TLut: 43

QTY	Prece	QTY				Weight
total	Mark	unit	Description	Length	Remarks	Unit
			FIELD BOLTS			
8			5/8 DIA EPOXY	0	5 1/2	
ONE	2C4		COLUMN			43
1	2C4	1	HSS3x3x3/16	5	1 1/8 S2E A500B	35
1	f3_2	1	FL 1/2 x 5	0	6 1/2 A36	5
1	f4_2	1	FL 1/2 x 4	0	6 1/2 A36	4

REFERENCE:
2-E1, 2-E2

NOTES

- HOLES 13/16" U.N.O. (OVERSIZE AN ADDITIONAL 1/16 WHEN GALV'D)
- WELD 1/4 FILLET U.N.O. (E70XX)
- FINISH: 1-S/C STD PRIMER
- HAND TOOL CLEAN
- ☉ = W.P. (TAILS)



ONE BEAM 4B1

W | 23¹⁵/₁₆ x 7⁷/₁₆
 F | 9 x 1¹/₁₆

OK TO PAINT
 AROUND TOP FLANGE HOLES

FOR PRODUCTION 10-3-06
 FOR APPROVAL 9-13-06

SHOP NOTE:
 1. NO PAINT 3" AROUND HOLES/SLOTS AND IN BETWEEN.
 2. NO PAINT ON GUSSETS.

BILL OF MATERIAL

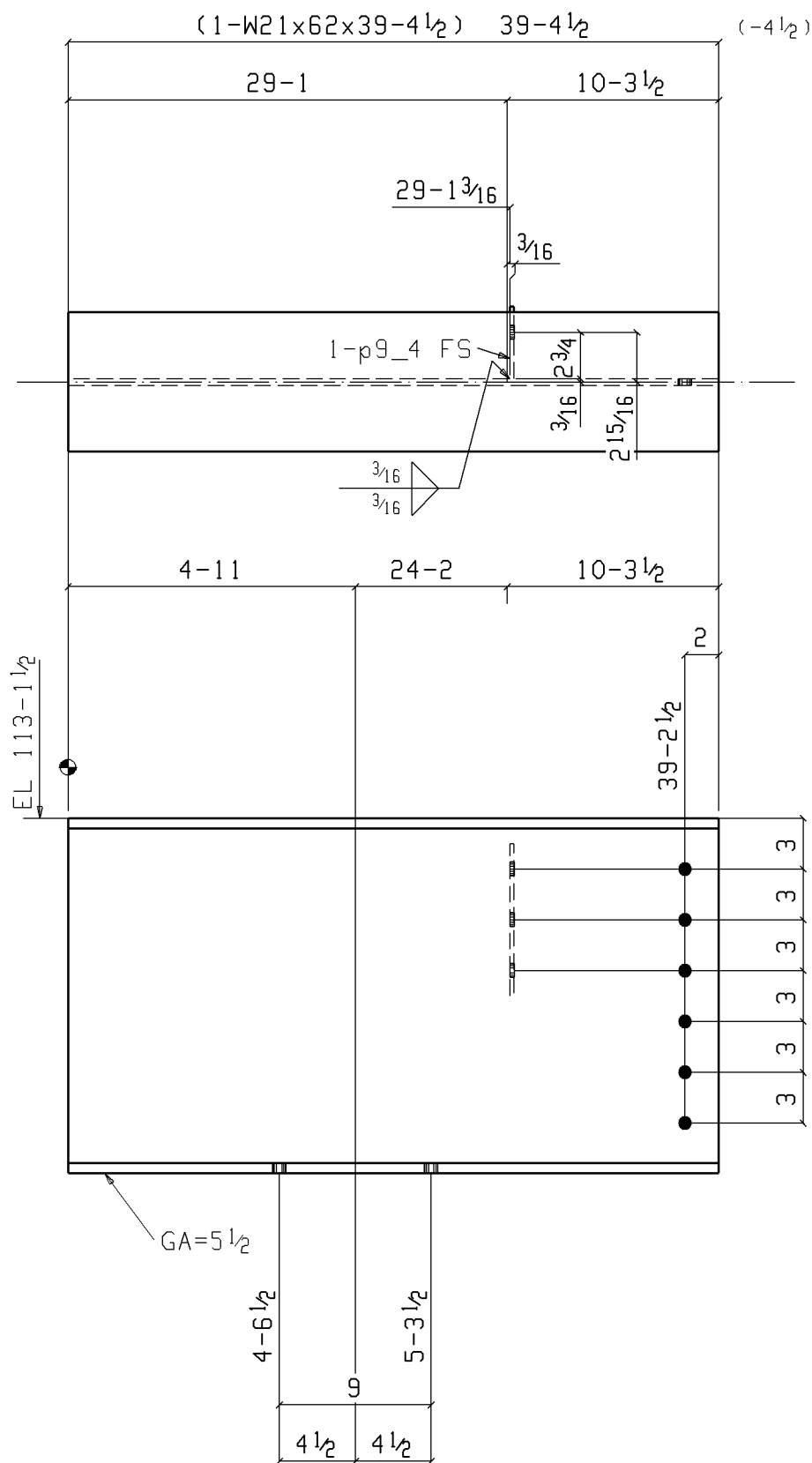
TLwt: 2242

QTY	Piece	QTY	Description	Length	Remarks	Weight
total	Mark	unit				Unit
ONE	4B1		BEAM			
1	4B1	1	W24x76	29 6	A992	2242
			FIELD BOLTS			
14			3/4 Dia A325SC	0 2	IHD WASH	

REFERENCE:
 4-E1 THRU 4-E7

NOTES

HOLES 1³/₁₆" U.N.O.
 (OVERSIZE AN ADDITIONAL 1/16
 WHEN GALV'D)
 WELD 1/4 FILLET U.N.O. (E70XX)
 FINISH: 1-S/C STD PRIMER
 HAND TOOL CLEAN
 ⊕ = W.P. (TAILS)



ONE BEAM 4B13

W	21x3/8
F	8 1/4x5/8

FOR PRODUCTION 10-3-06
FOR APPROVAL 9-13-06

SHOP NOTE:
1. NO PAINT 3" AROUND HOLES/SLOTS AND IN BETWEEN.
2. NO PAINT ON GUSSETS.

BILL OF MATERIAL

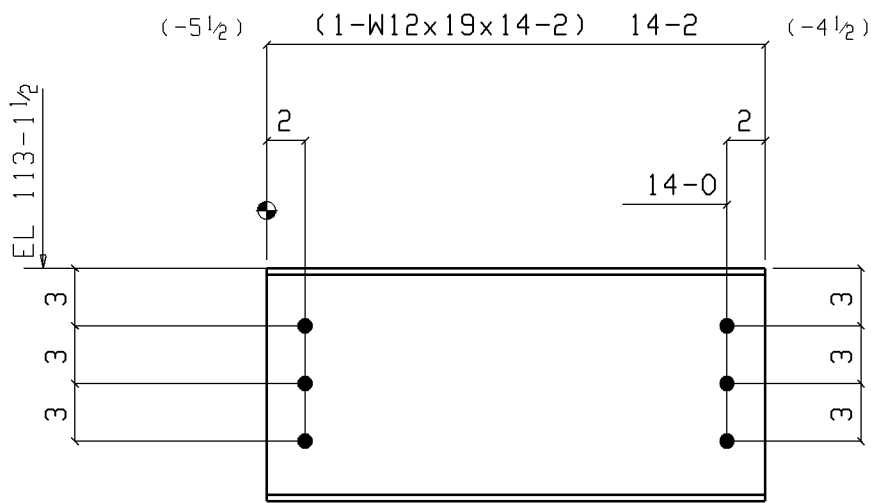
TLut: 2444

QTY	Prece	QTY	Length		Remarks	Weight
total	Mark	unit	Description			Unit
ONE	4B13		BEAM			2444
1	4B13	1	W21x62	39 4 1/2	A992	2441
1	p9_4	1	PL 1/4x4 1/4	0 9	A36	3
			FIELD BOLTS			
4			3/4 Dia A325SC	0 2 3/4	IHD WASH	
6			3/4 Dia A325SC	0 2	IHD WASH	

REFERENCE:
4-E1 THRU 4-E7

NOTES

HOLES 13/16" U.N.O.
(OVERSIZE AN ADDITIONAL 1/16
WHEN GALV'D)
WELD 1/4 FILLET U.N.O. (E70XX)
FINISH: 1-S/C STD PRIMER
HAND TOOL CLEAN
⊙ = W.P. (TAILS)



ONE BEAM 4B49

W | 12³/₁₆ x ¹/₄
 F | 4 x ³/₈

FOR PRODUCTION 10-3-06
 FOR APPROVAL 9-13-06

SHOP NOTE:
 1. NO PAINT 3" AROUND HOLES/SLOTS AND IN BETWEEN.
 2. NO PAINT ON GUSSETS.

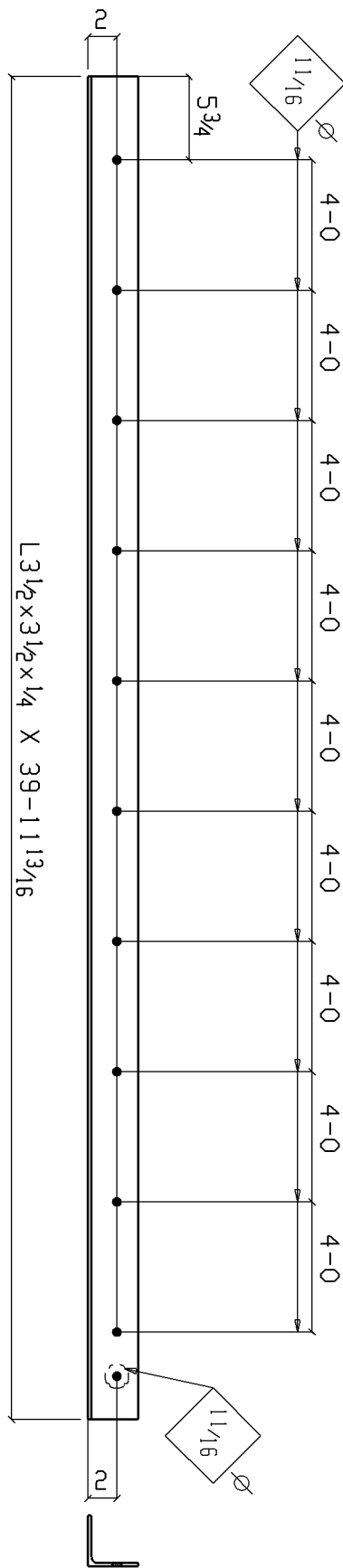
BILL OF MATERIAL

TLwt: 269

QTY	Piece	QTY	Description	Length	Remarks	Weight	
total	Mark	unit				Unit	
ONE	4B49		BEAM			269	
1	4B49	1	W12x19	14	2	A992	269
			FIELD BOLTS				
6			³ / ₄ Dia A325SC	0	1 ³ / ₄	IHD WASH	

REFERENCE:
 4-E1 THRU 4-E7

NOTES
 HOLES ¹³/₁₆" U.N.O.
 (OVERSIZE AN ADDITIONAL ¹/₁₆
 WHEN GALV'D)
 WELD ¹/₄ FILLET U.N.O. (E70XX)
 FINISH: 1-S/C STD PRIMER
 HAND TOOL CLEAN
 ⊕ = W.P. (TAILS)



ONE LEDGER ANGLE SM9

FOR PRODUCTION 10-3-06
 FOR APPROVAL 9-18-06

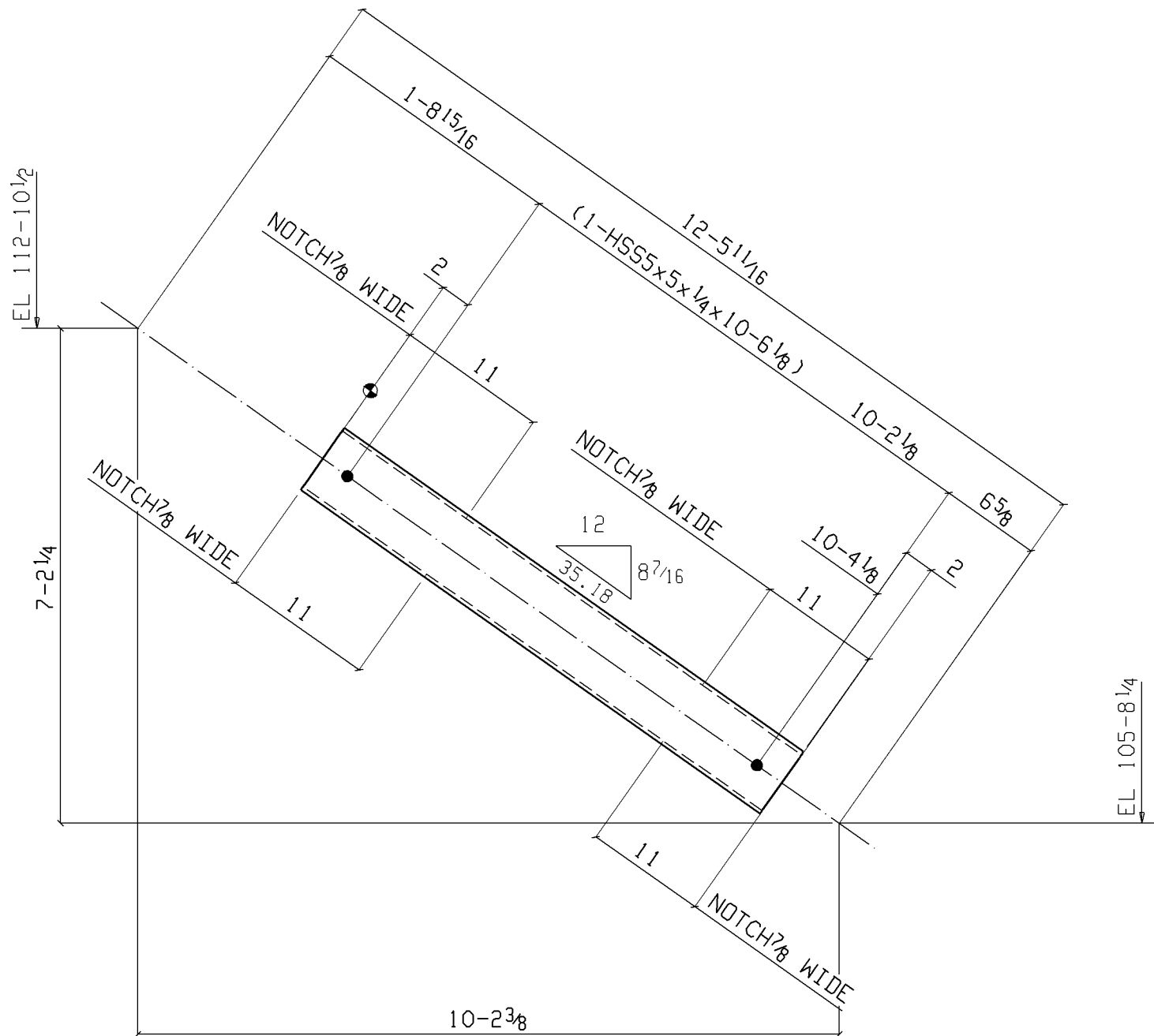
BILL OF MATERIAL

TLwt: 232

QTY	Prece	QTY	Description	Length	Remarks	Weight
total	Mark	unit				Unit
ONE	SM9		LEDGER ANGLE			232
1	SM9	1	L3 1/2 x 3 1/2 x 1/4	39	11 13/16 A36	232
			FIELD BOLTS			
11			5/8 Dia EXP BOLT	0	6	

REFERENCE:
 5-E3 TO 5-E5

NOTES
 HOLES 1 3/16" U.N.O.
 (OVERSIZE AN ADDITIONAL 1/16
 WHEN GALV'D)
 WELD 1/4 FILLET U.N.O. (E70XX)
 FINISH: 1-S/C STD PRIMER
 HAND TOOL CLEAN
 ⊕ = W.P. (TAILS)



ONE VERTICAL BRACE 5VB9

FOR PRODUCTION 10-3-06
FOR APPROVAL 9-13-06

SHOP NOTE:
NO PAINT AROUND ENDS SLOT LENGTH PLUS 2".

BILL OF MATERIAL

TLwt: 164

QTY	Prece	QTY	Description	Length	Remarks	Weight
total	Mark	unit				Unit
ONE	5VB9		VERTICAL BRACE			
1	5VB9	1	HSS5x5x1/4	10 6 1/8	A500B	164
			FIELD BOLTS			
2			3/4 Dia A307	0 6		

REFERENCE:
4-E1 THRU 4-E7
5-E1, 5-E2

NOTES
HOLES 13/16" U.N.O.
(OVERSIZE AN ADDITIONAL 1/16
WHEN GALV'D)
WELD 1/4 FILLET U.N.O. (E70XX)
FINISH: 1-5/C STD PRIMER
HAND TOOL CLEAN
⊕ = W.P. (TAILS)