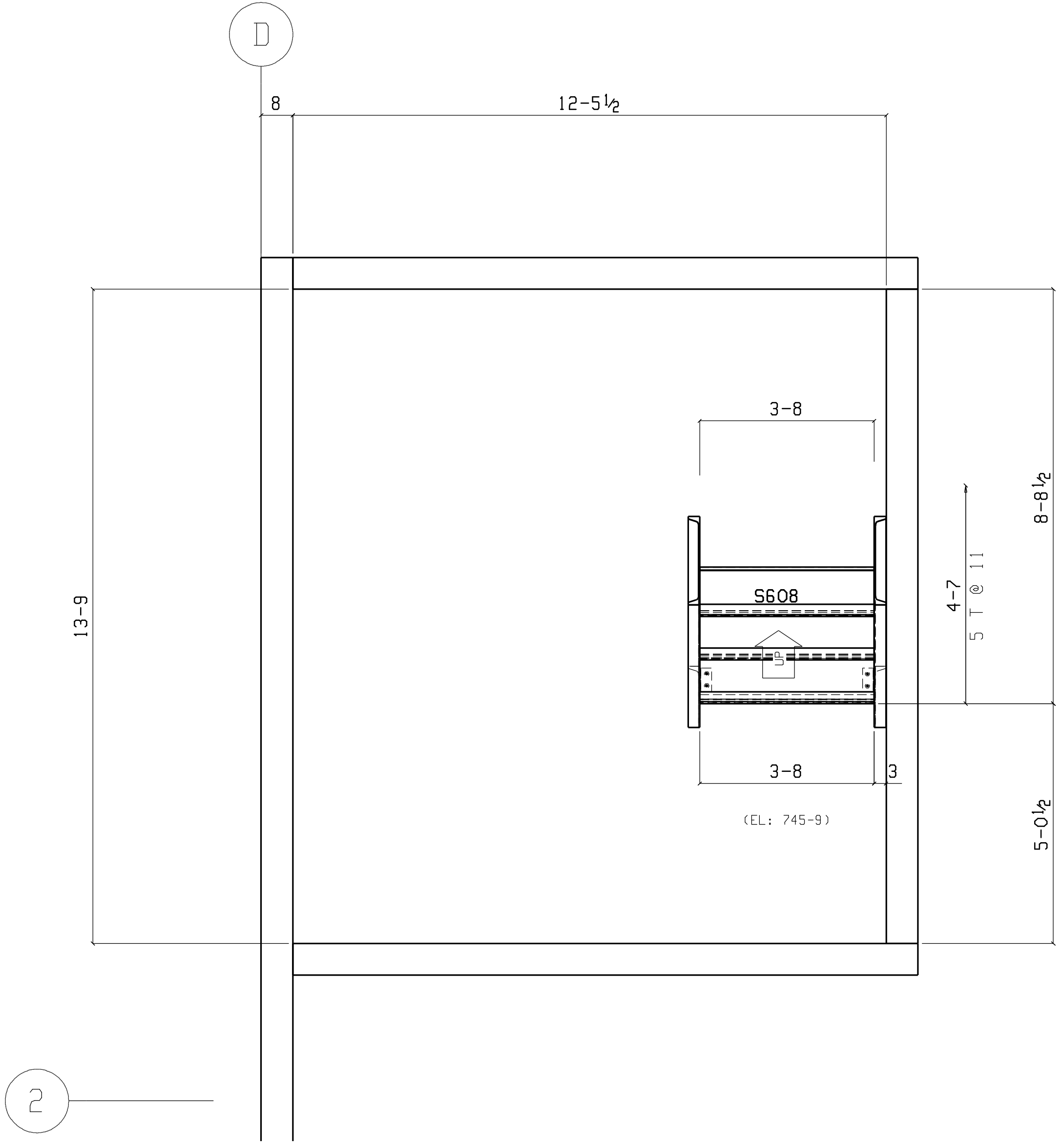
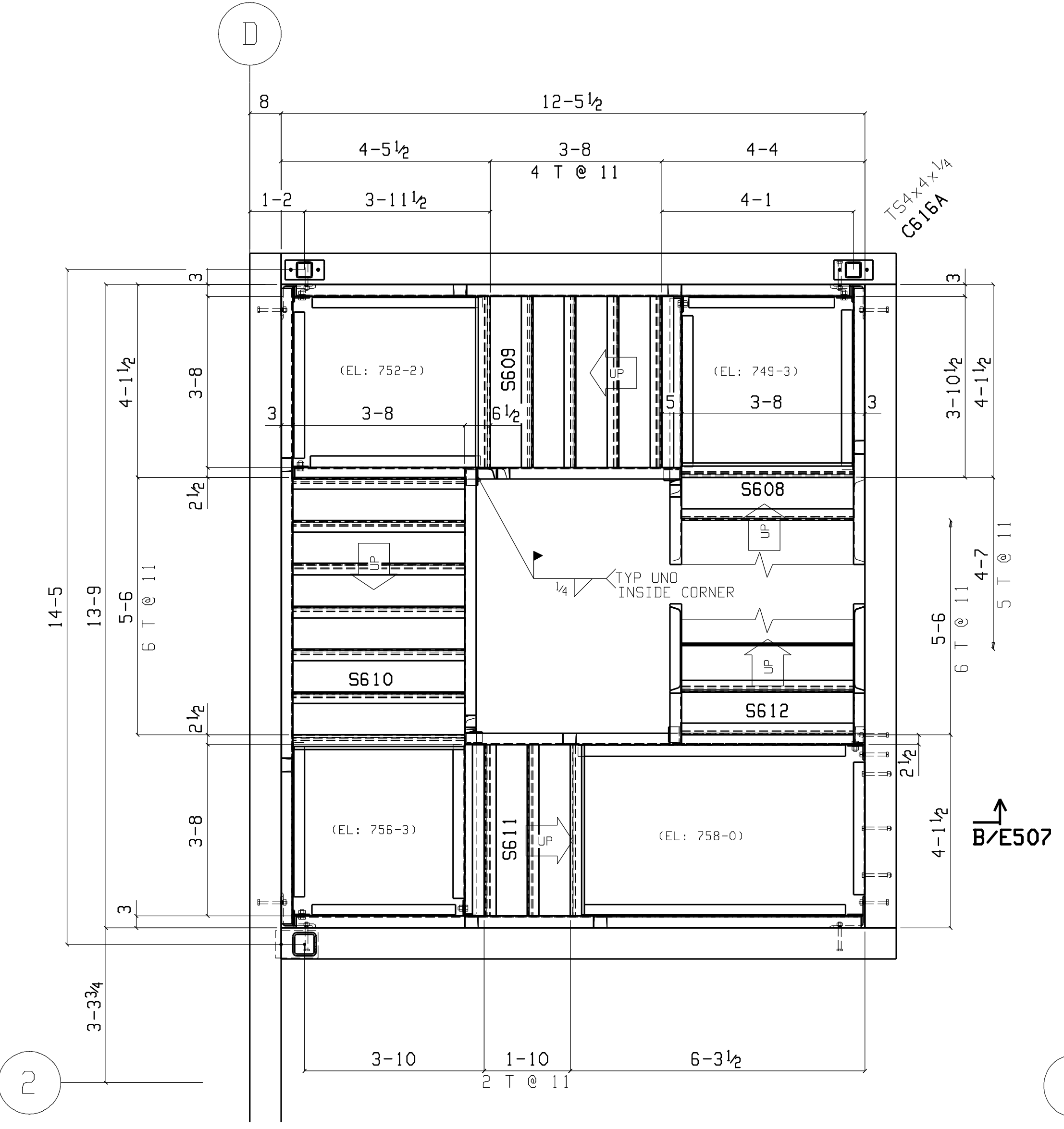
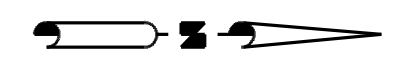


JUL 06 2005 09:07:33 AM FILE: SDS2/FT55



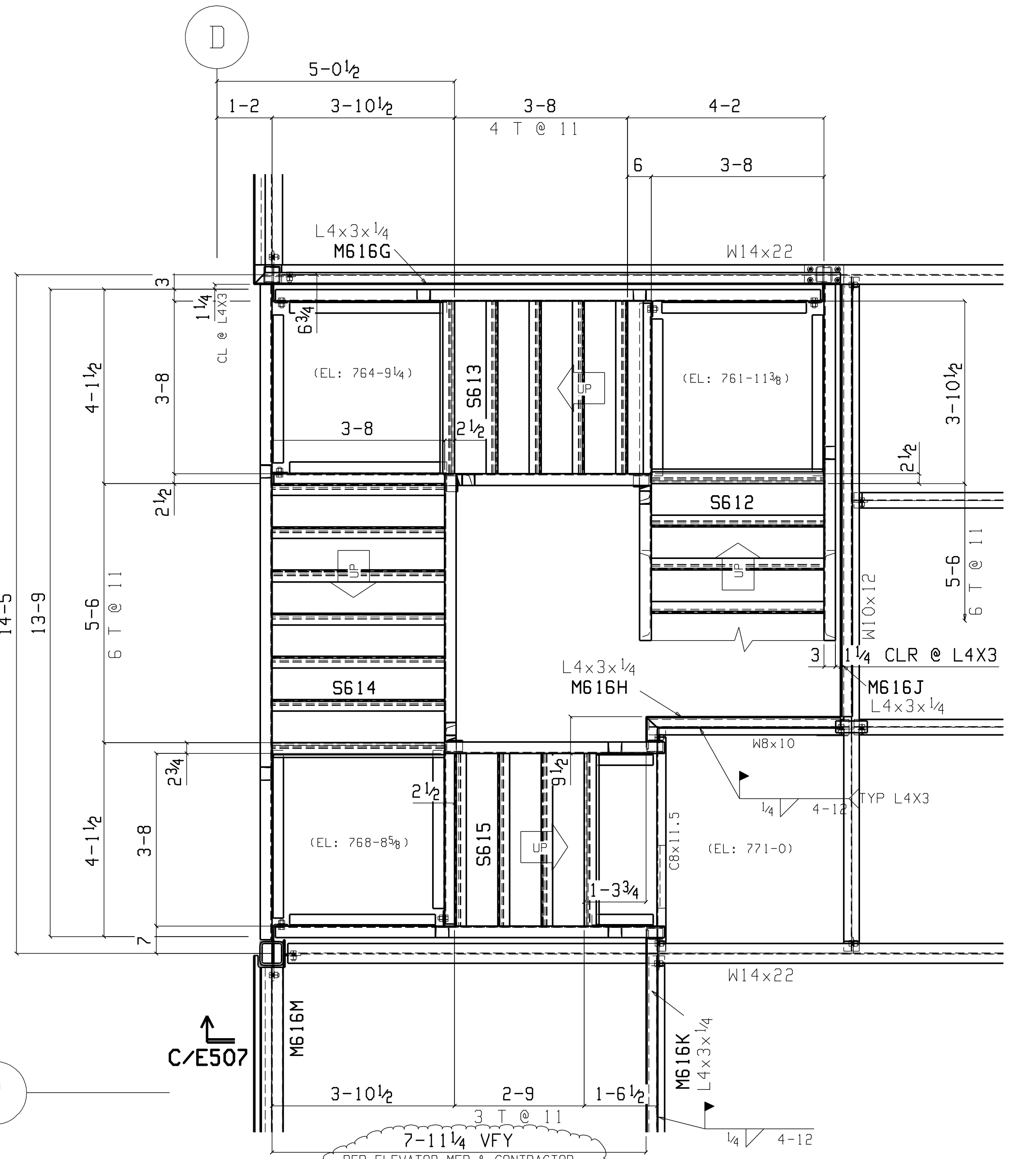
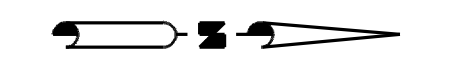
SOUTH STAIR PLAN LVL 3

FF EL 745-9 U.N.



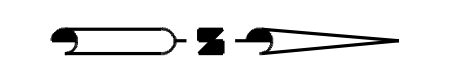
SOUTH STAIR PLAN LVL 4

FF EL 758-0 U.N.



SOUTH STAIR PLAN MECH. LVL

FF EL 771-0 U.N.



- NOTES:**
1. ERECT ALL MEMBER WITH THE MARKED END IN THE SAME RELATIVE POSITION AS SHOWN ON THE ERECTION DRAWING.
 2. B.O.S.=BOTTOM OF STEEL. ELEVATIONS REFERENCED (xxx-x x/x) ARE TOP OF STEEL.
 3. PLEASE PROVIDE INFORMATION AND VERIFICATIONS INDICATED IN CLOUDED AREAS. CLOUDED NOTES WITH NO REMARKS FROM THE APPROVAL AUTHORITY WILL BE CONSIDERED AS AN AFFIRMATION.
 4. CONTRACTOR AND ERECTOR ARE WHOLLY RESPONSIBLE FOR ERECTION SAFETY. DETAILS ARE PRESENTED AS DESIGNED IN CONTRACT DOCUMENTS UNLESS NOTED.

REF: S2.7, A6.4

DETAILING: JOB 1128

FABRICATION TECHNICAL SERVICES, INC.
1839 S. GREENFERRY RD, COEUR D'ALENE ID 83814
(208) 457-8282 fax: (208) 457-8208

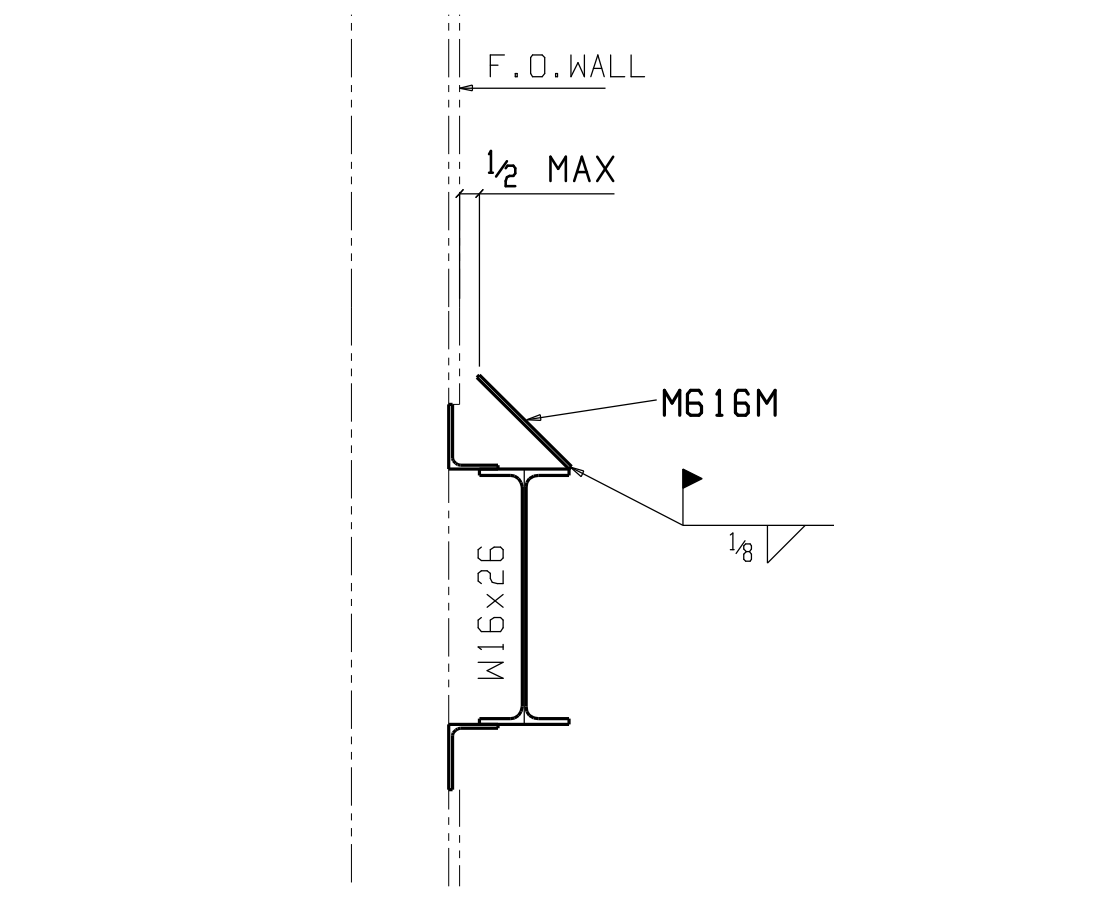
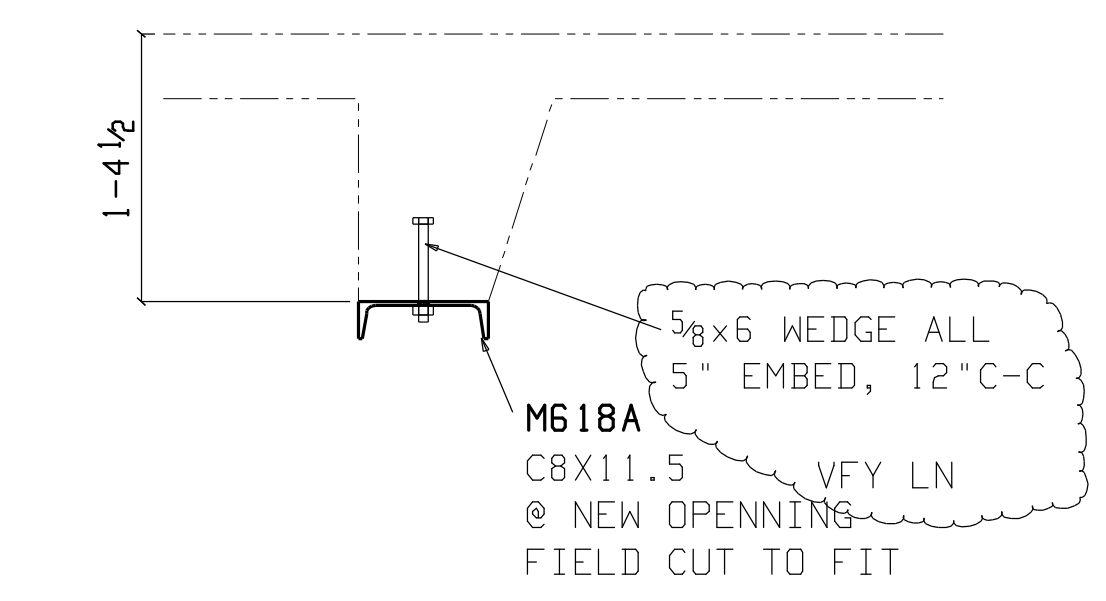
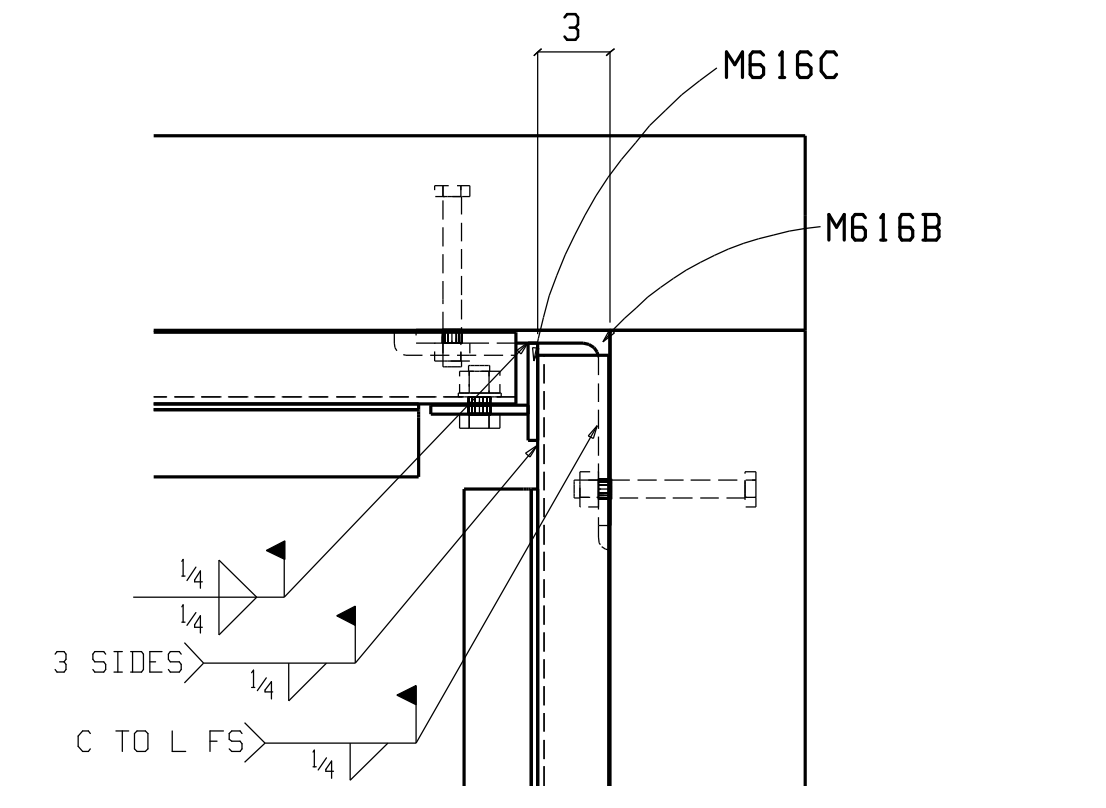
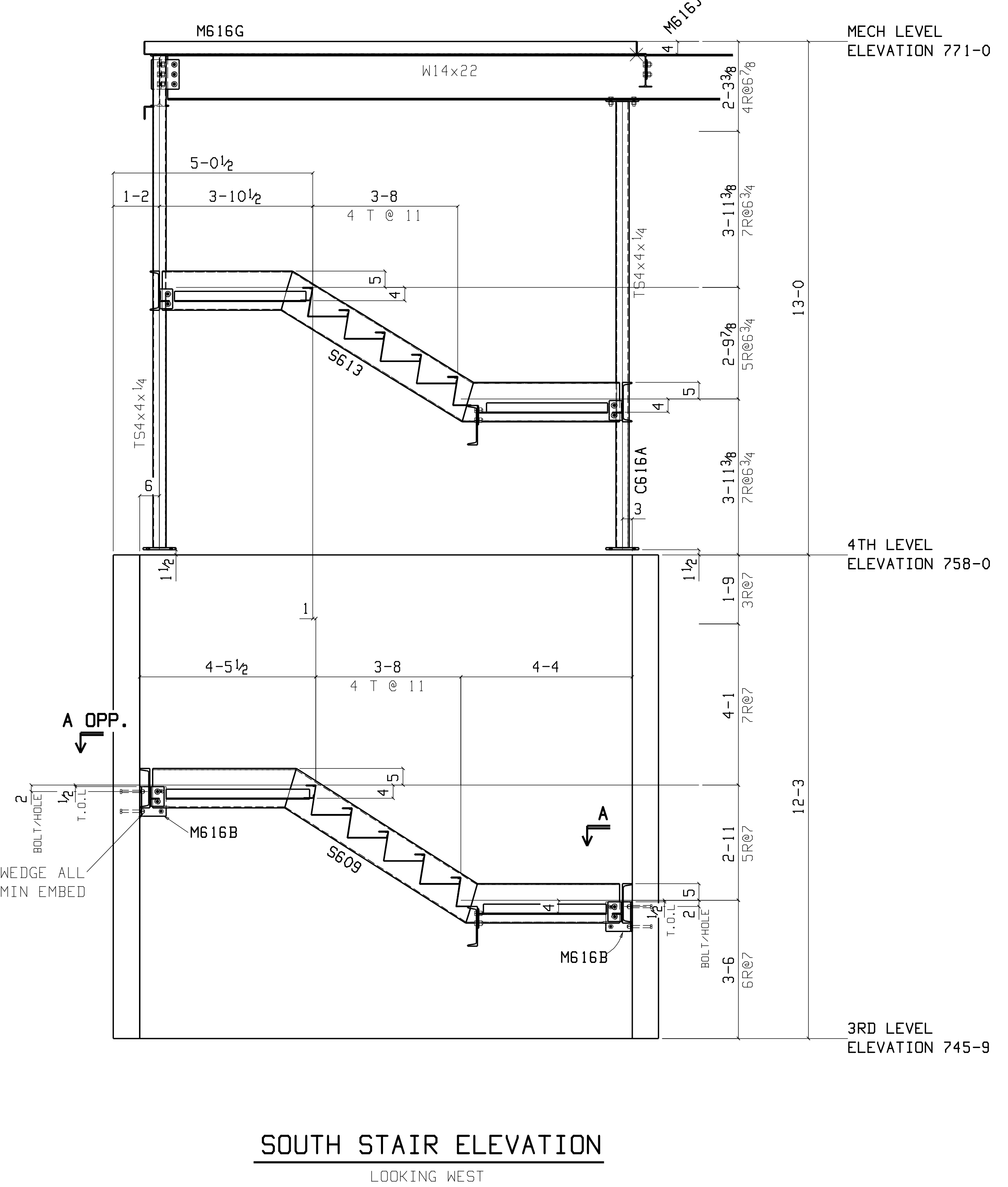
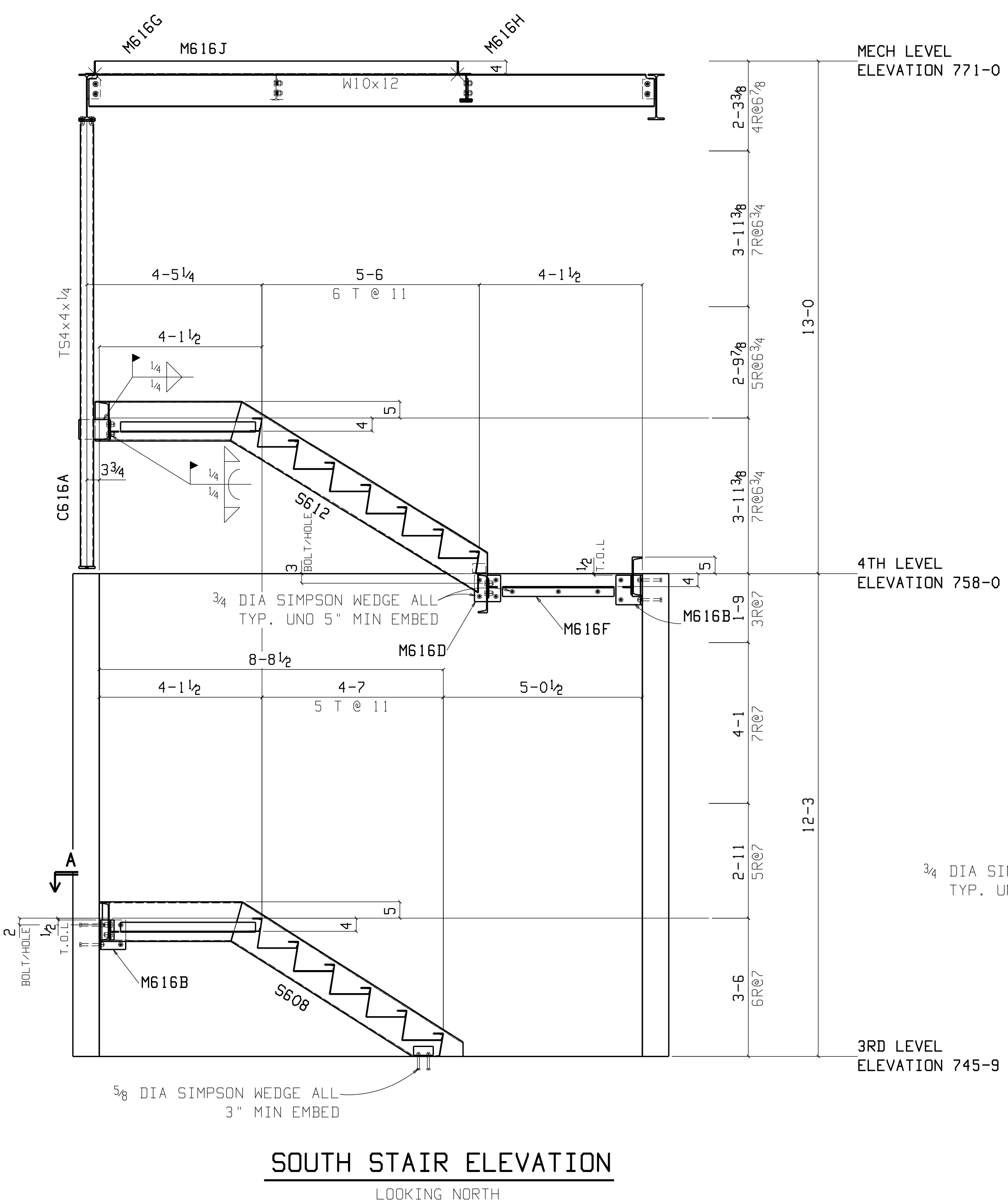
WESTERN STATES STEEL & FAB, INC.

E. 1812 HOLYOKE
SPOKANE, WASHINGTON 99217
ph: (509) 489-8046 fax: (509) 489-3739

REVISIONS			PROJECT	
NO.	DATE	BY	CONTRACTOR	DATE
1			G.G. Richardson, Inc.	CMR OK KB
2				JUN 11 2004
3				903
4				E506
5				

DESCRIPTION: ERECTION PLANS SOUTH STAIR

JUL 06 2005 09:07:36 AM FILE: SDS2/FT55



- NOTES:**
1. ERECT ALL MEMBER WITH THE MARKED END IN THE SAME RELATIVE POSITION AS SHOWN ON THE ERECTION DRAWING.
 2. B.O.S.=BOTTOM OF STEEL. ELEVATIONS REFERENCED (xxx-x x/x) ARE TOP OF STEEL.
 3. PLEASE PROVIDE INFORMATION AND VERIFICATIONS INDICATED IN CLOUDED AREAS. CLOUDED NOTES WITH NO REMARKS FROM THE APPROVAL AUTHORITY WILL BE CONSIDERED AS AN AFFIRMATION.
 4. CONTRACTOR AND ERECTOR ARE WHOLLY RESPONSIBLE FOR ERECTION SAFETY. DETAILS ARE PRESENTED AS DESIGNED IN CONTRACT DOCUMENTS UNLESS NOTED.

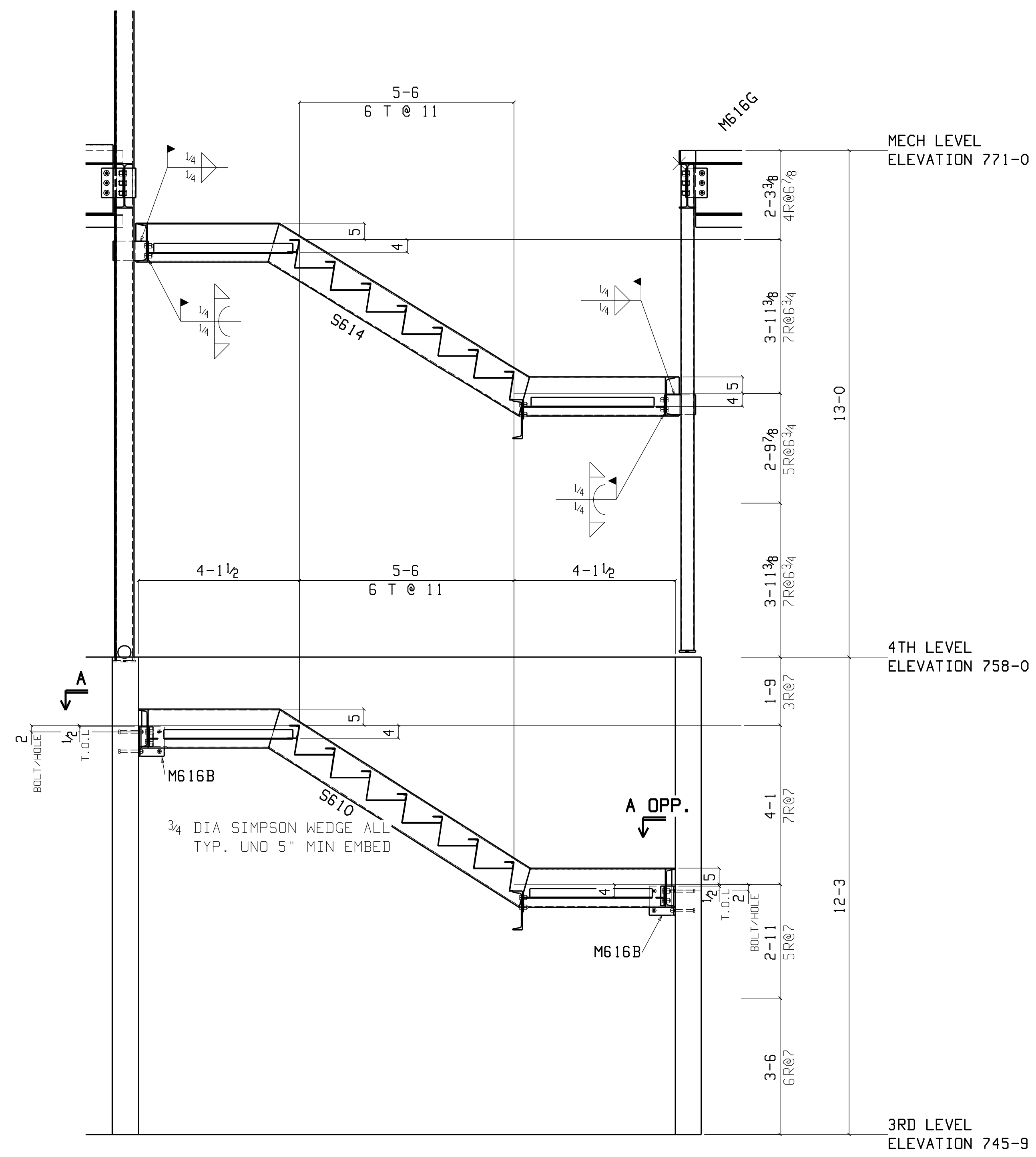
REF: E506

DETAILING: JOB 1128
FABRICATION TECHNICAL SERVICES, INC.
1839 S. GREENFERRY RD, COEUR D'ALENE ID 83814
(208) 457-8282 fax: (208) 457-8208

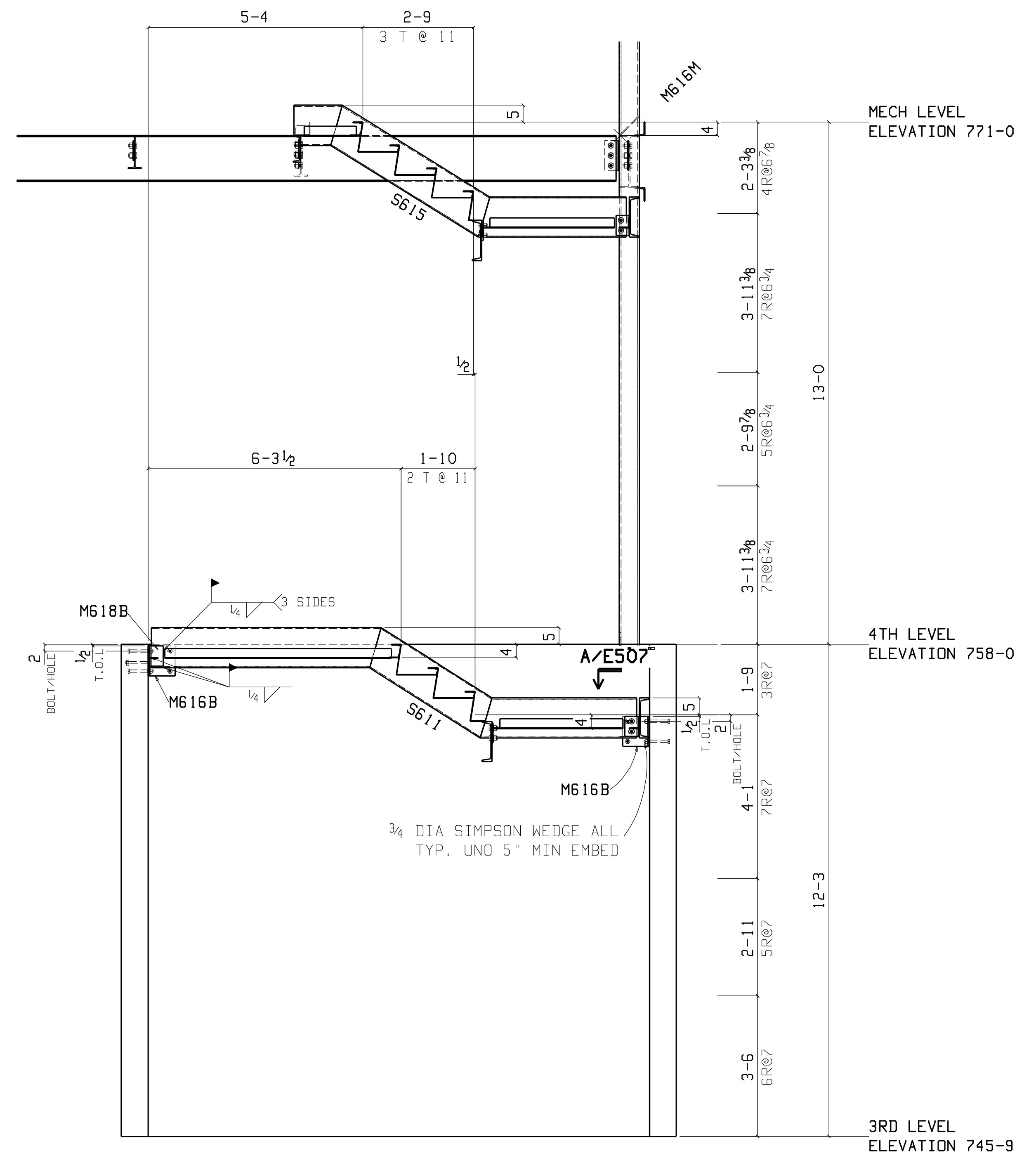
WESTERN STATES STEEL & FAB, INC.
E. 1812 HOLYOKE
SPOKANE, WASHINGTON 99217
ph: (509) 489-8046 fax: (509) 489-3739

REVISIONS			PROJECT	
NO.	DATE	BY	NO.	DESCRIPTION
1			1	CHELAN COUNTY 316 BUILDING
2			2	CONTRACTOR: G.G. Richardson, Inc.
3			3	DATE: JUN 11 2004
4			4	DESCRIPTION: ERECTION PLANS
5			5	SOUTH STAIR

JUL 06 2005 09:07:39 AM FILE: SDS2/FT55



SOUTH STAIR ELEVATION
LOOKING SOUTH



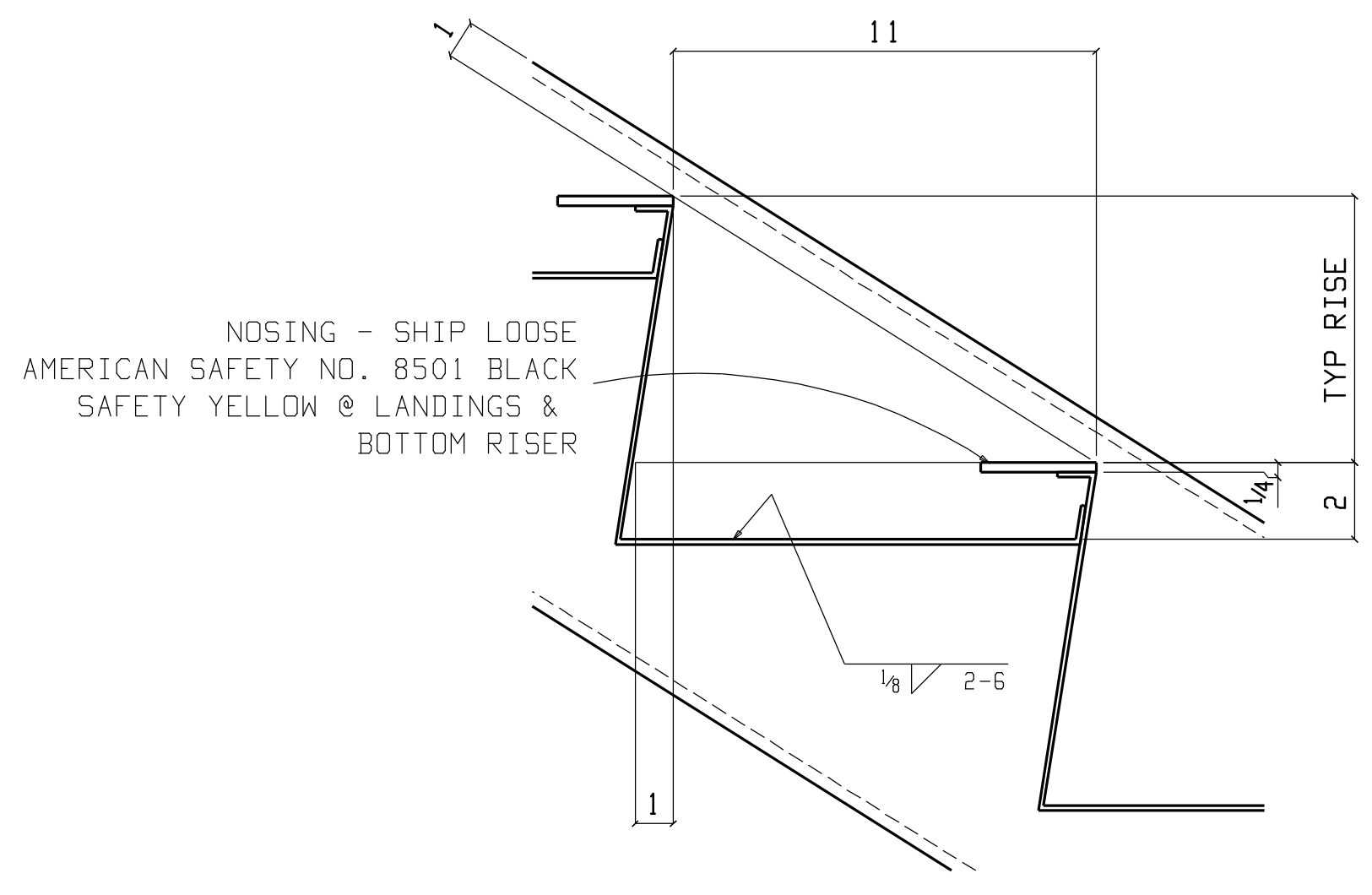
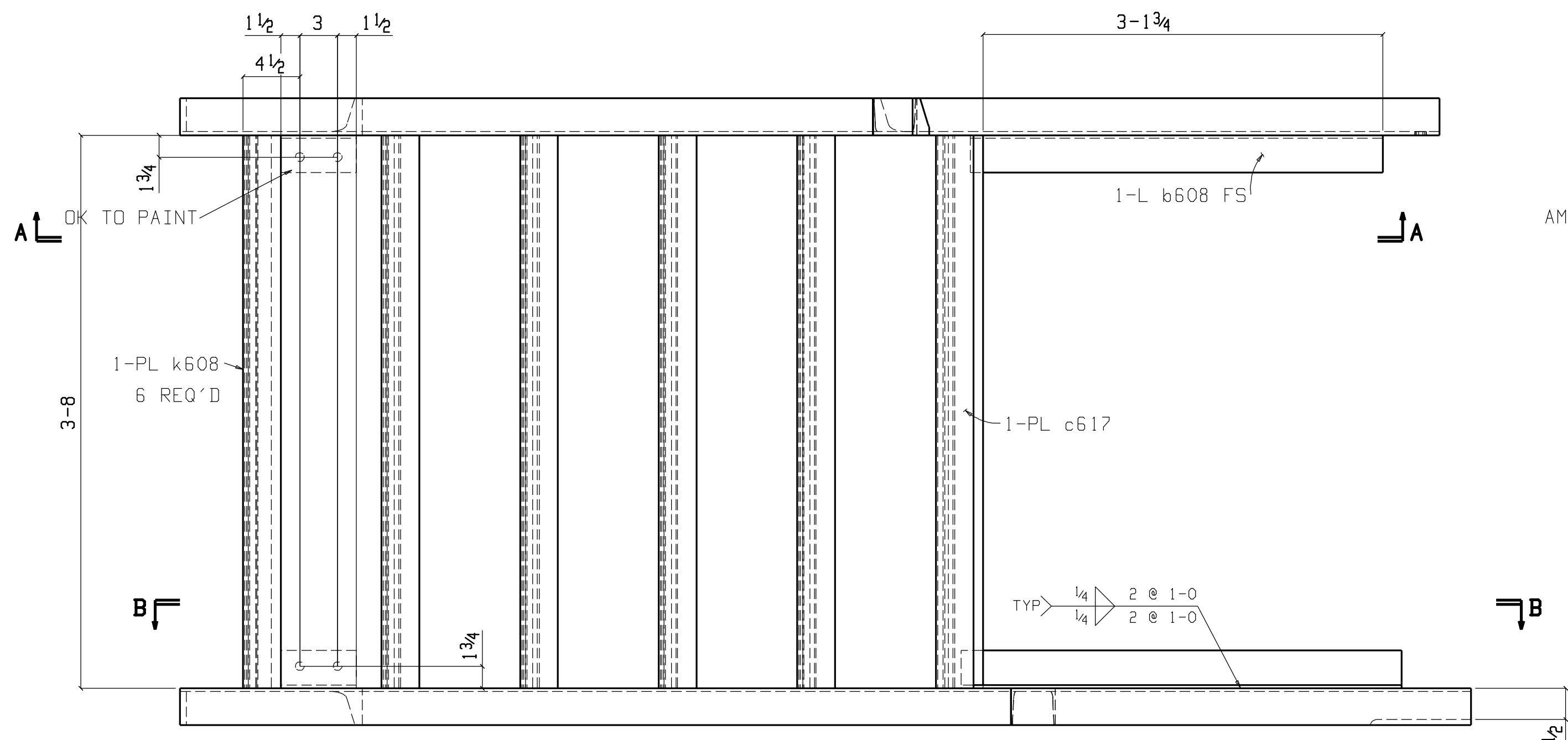
SOUTH STAIR ELEVATION
LOOKING EAST

- NOTES:
1. ERECT ALL MEMBER WITH THE MARKED END IN THE SAME RELATIVE POSITION AS SHOWN ON THE ERECTION DRAWING.
 2. B.O.S.=BOTTOM OF STEEL. ELEVATIONS REFERENCED (xxx-x x/x) ARE TOP OF STEEL.
 3. PLEASE PROVIDE INFORMATION AND VERIFICATIONS INDICATED IN CLOUDED AREAS. CLOUDED NOTES WITH NO REMARKS FROM THE APPROVAL AUTHORITY WILL BE CONSIDERED AS AN AFFIRMATION.
 4. CONTRACTOR AND ERECTOR ARE WHOLLY RESPONSIBLE FOR ERECTION SAFETY. DETAILS ARE PRESENTED AS DESIGNED IN CONTRACT DOCUMENTS UNLESS NOTED.

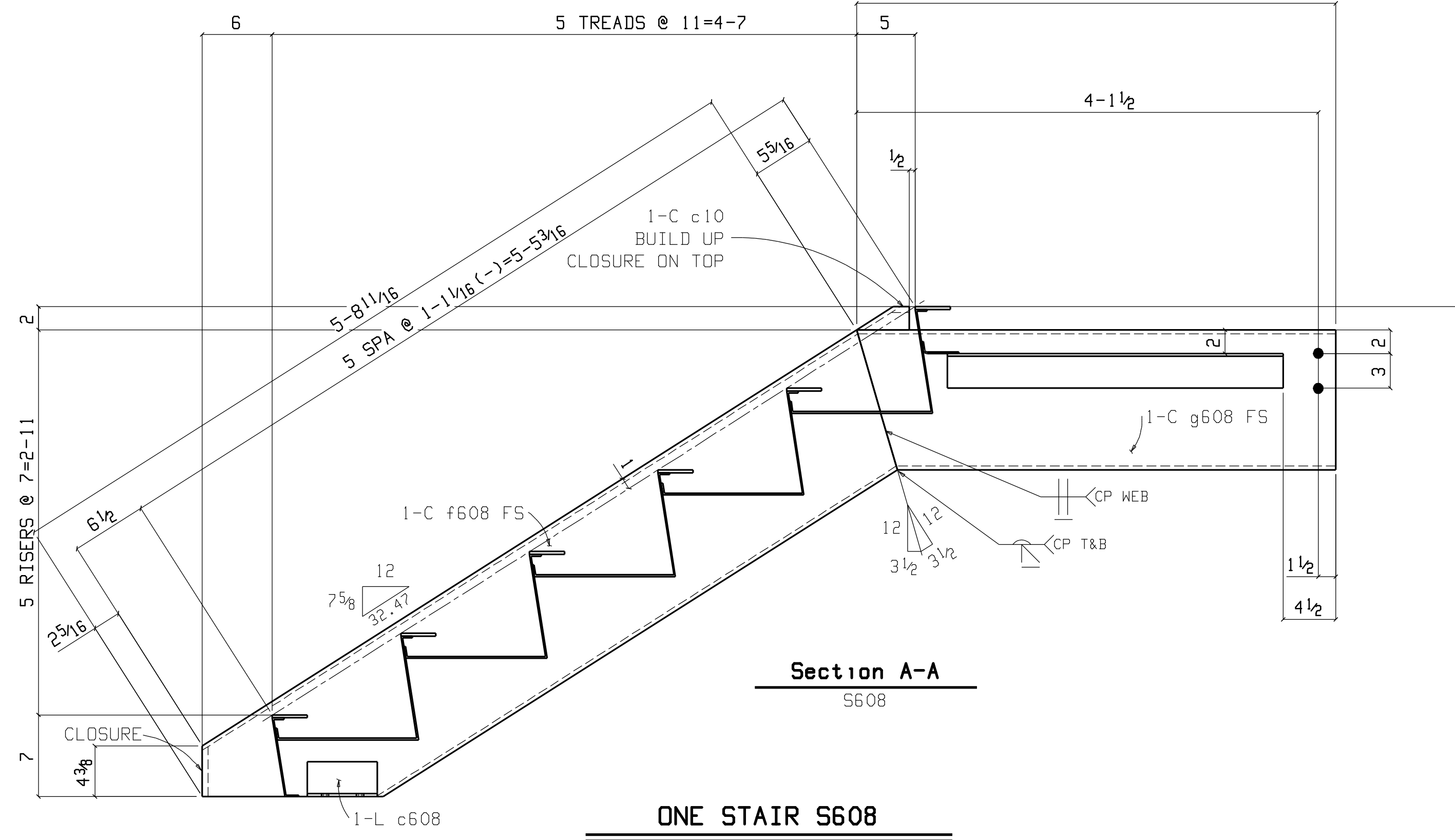
REF: E506		WESTERN STATES STEEL & FAB, INC. E. 1812 HOLYOKE SPOKANE, WASHINGTON 99217 ph: (509) 489-8046 fax: (509) 489-3739		PROJECT CHELAN COUNTY 316 BUILDING																						
DETAILING: JOB 1128		FABRICATION TECHNICAL SERVICES, INC. 1839 S. GREENFERRY RD, COEUR D'ALENE ID 83814 (208) 457-8282 fax: (208) 457-8208		CONTRACTOR G.G. Richardson, Inc.																						
				DATE JUN 11 2004																						
				JOB NO. 903																						
				DESCRPTION ERECTION PLANS SOUTH STAIR																						
				ENCL NO. E508																						
				<table border="1"> <thead> <tr> <th colspan="3">REVISIONS</th> </tr> <tr> <th>NO.</th> <th>DATE</th> <th>BY</th> </tr> </thead> <tbody> <tr> <td>1</td> <td></td> <td></td> </tr> <tr> <td>2</td> <td></td> <td></td> </tr> <tr> <td>3</td> <td></td> <td></td> </tr> <tr> <td>4</td> <td></td> <td></td> </tr> <tr> <td>5</td> <td></td> <td></td> </tr> </tbody> </table>		REVISIONS			NO.	DATE	BY	1			2			3			4			5		
REVISIONS																										
NO.	DATE	BY																								
1																										
2																										
3																										
4																										
5																										

BILL OF MATERIAL

QTY	Piece	QTY	Description	Length	Remarks	Unit	Weight
ONE	S608		STAIR				711
1	a608	1	L3x3x1/4	3 5	A36		17
1	b608	1	L3x3x1/4	3 2 3/4	A36		16
2	c608	2	L3x3x1/4	0 6	A36		2
1	d608	1	C12x20.7	6 9 3/4	A36		141
1	f608	1	C12x20.7	5 8 11/16	A36		119
1	g608	1	C12x20.7	4 3	A36		88
1	h608	1	C12x20.7	3 6 1/2	A36		73
1	j608	1	C12x20.7	0 4 7/8	A36		8
6	k608	6	AST 8501 NOSING	3 7	A36		9
			4- BLACK				
			2- SAFETY YELLOW				
1	a617	1	BPL12GAx44	0 8 1/2	BENT A36		14
5	b617	5	BPL12GAx22 3/16	3 8	BENT A36		34
1	c617	1	BPL12GAx3 13/16	3 8	BENT A36		6
			FIELD BOLTS				
2		2	7/8 Dia A325SC	0 2	1HD WASH		
4		4	5/8 Dia WEDGE ALL	0 5			

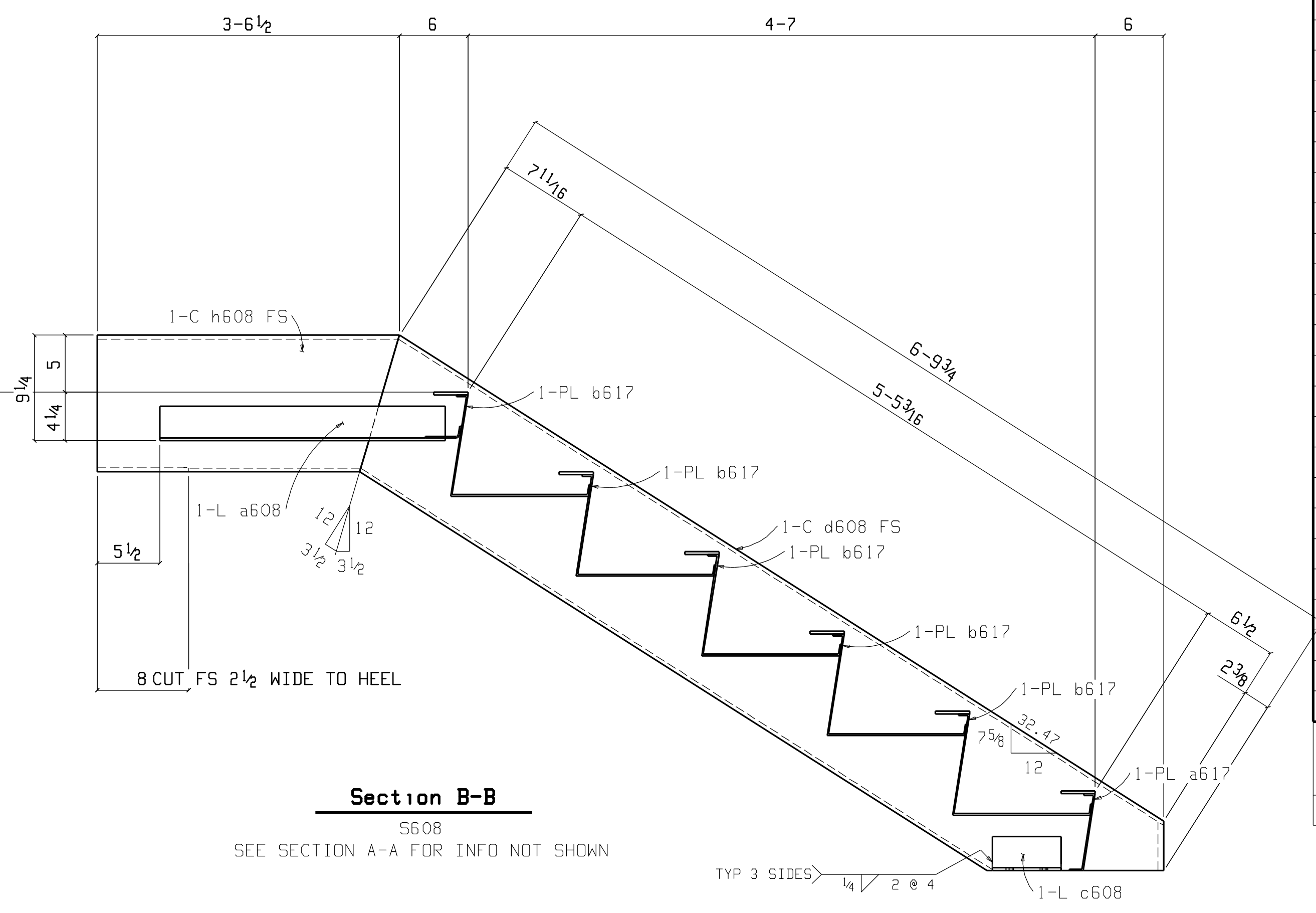


TREAD DETAIL
3/A6.5



Section A-A
S608

ONE STAIR S608



Section B-B
S608

SEE SECTION A-A FOR INFO NOT SHOWN

Total weight : 711

DETAILING: FABRICATION TECHNICAL SERVICES, INC.
JOB 1128 1839 S. GREENSFERRY RD., COEUR D'ALENE, ID 83814
(208) 457-8282 fax: (208) 457-8208

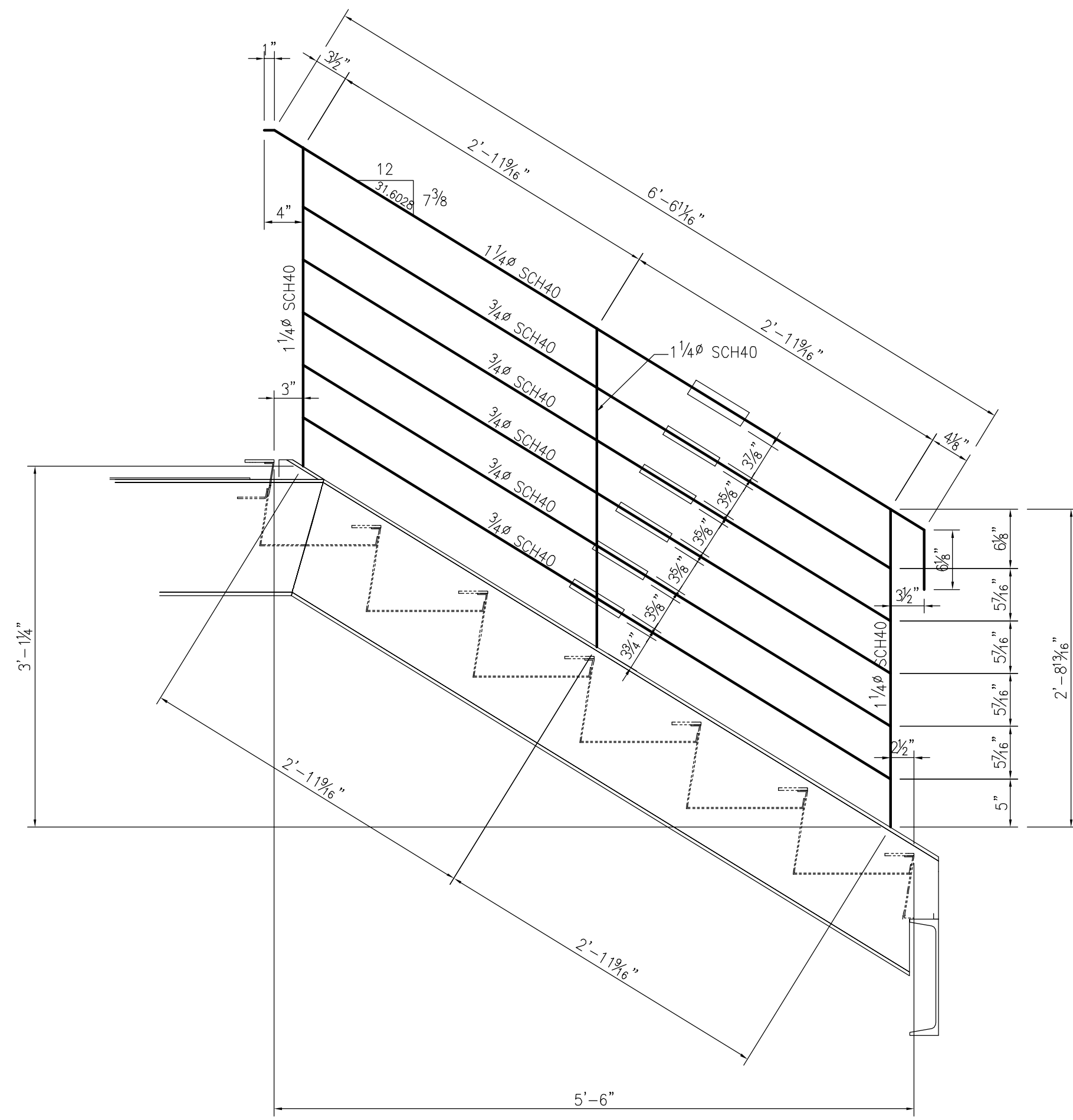
REF: E506

NOTES
HOLES 15/16" DIA U.N.O. W.P. (TAILS)
WELD 3/16 FILLET U.N.O. (E70XX)
FINISH SHOP PRIME

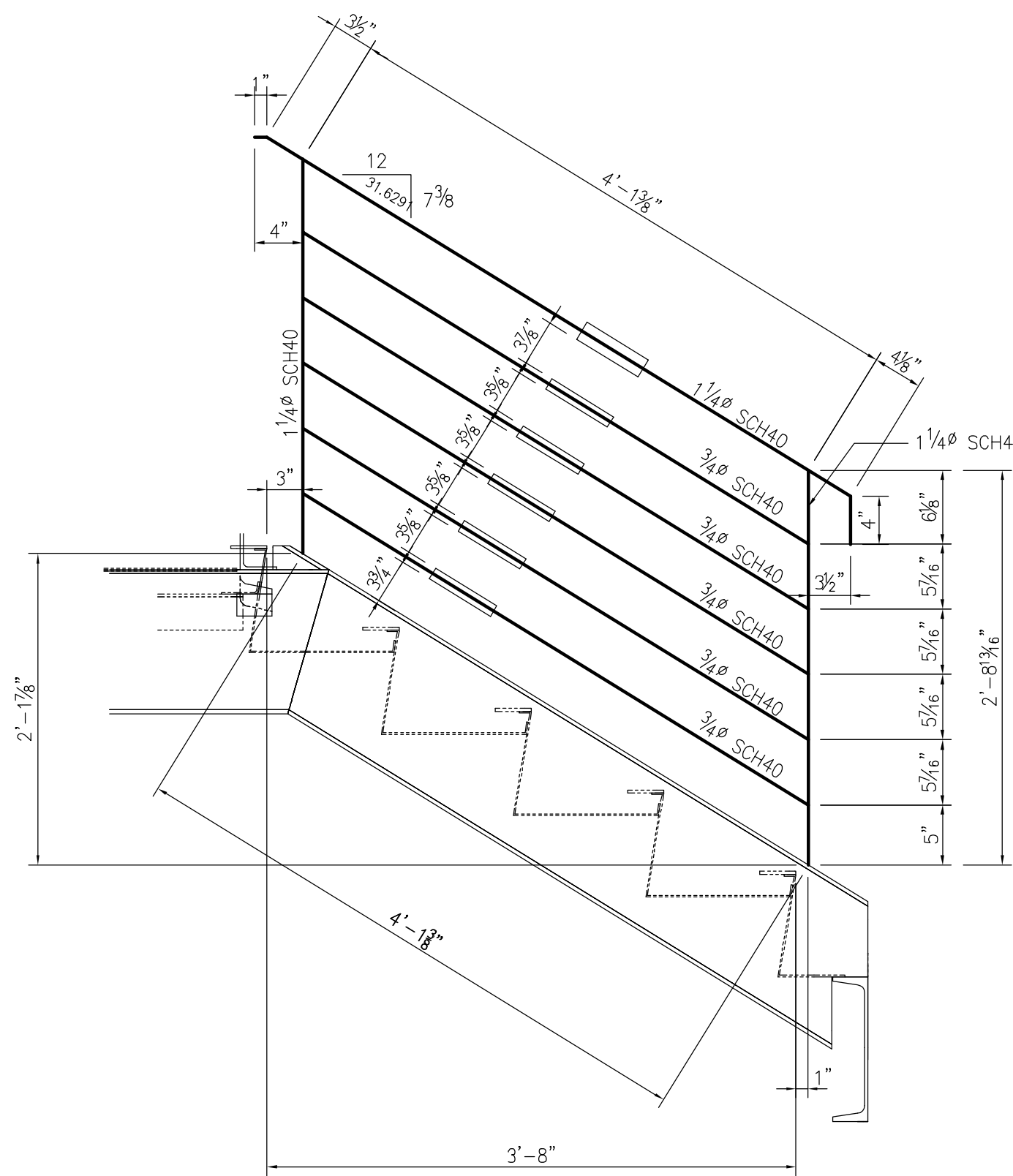
WESTERN STATES STEEL & FAB, INC.
E. 1812 HOLYOKE
SPOKANE, WASHINGTON 99217
ph: (509) 489-8046 fax: (509) 489-3739

NO.	DATE	BY	PROJECT	CONTRACTOR	DATE	CMR	CHK	KB
1	7-7-04	KB	CHELAN COUNTY 316 BUILDING	G.G. Richardson, Inc.	JUN 11 2004			
2								
3								
4								
5								

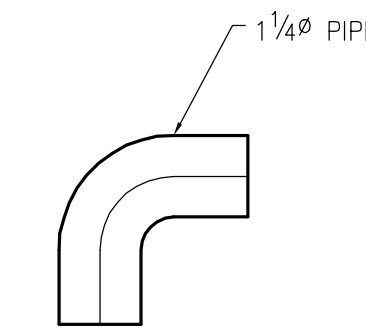
PAINT NOTE:
NO PAINT INSIDE OF TREAD.
NO PAINT 3 INCHES AROUND HOLE AND IN BETWEEN



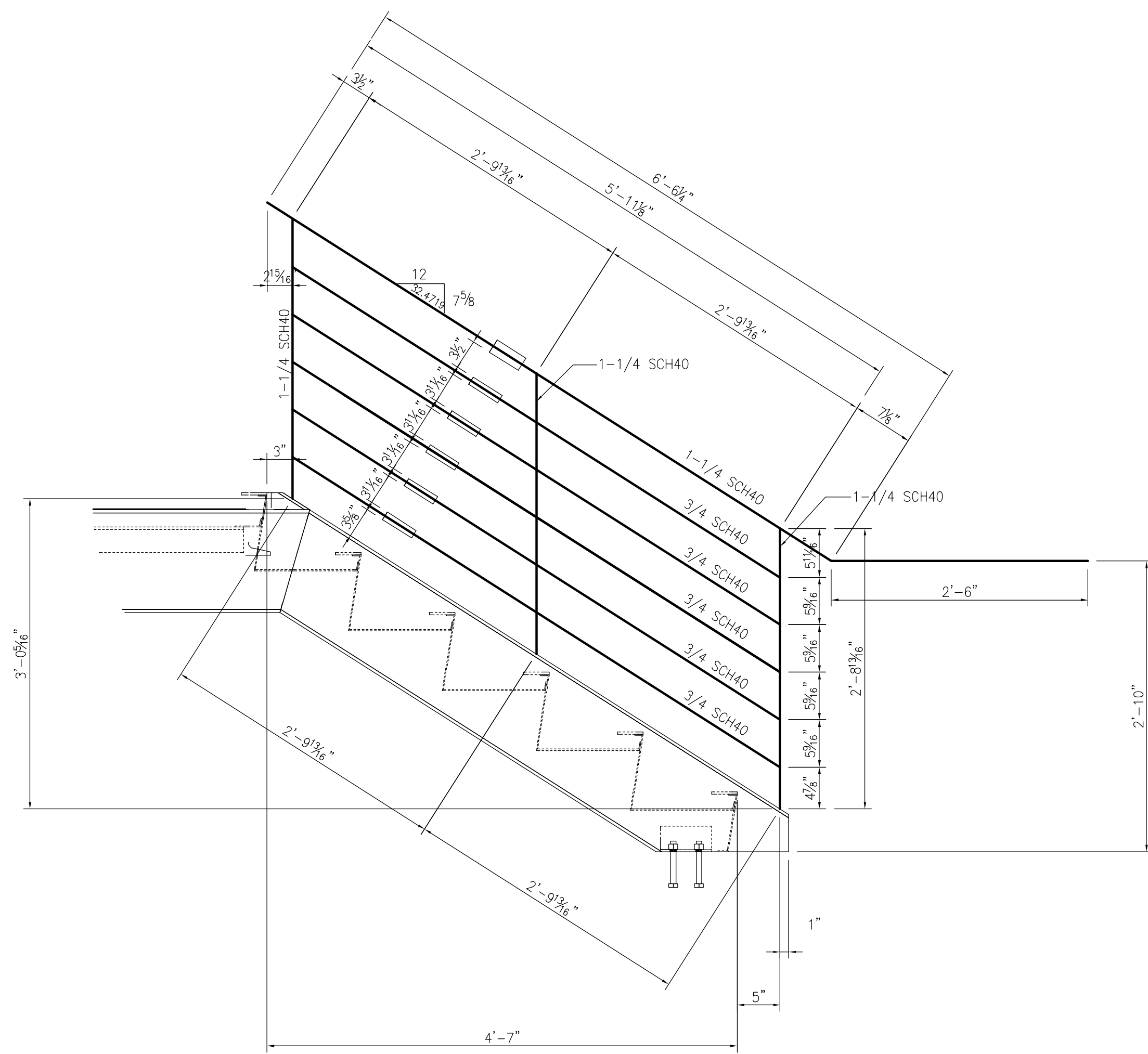
ONE HANDRAIL R708A



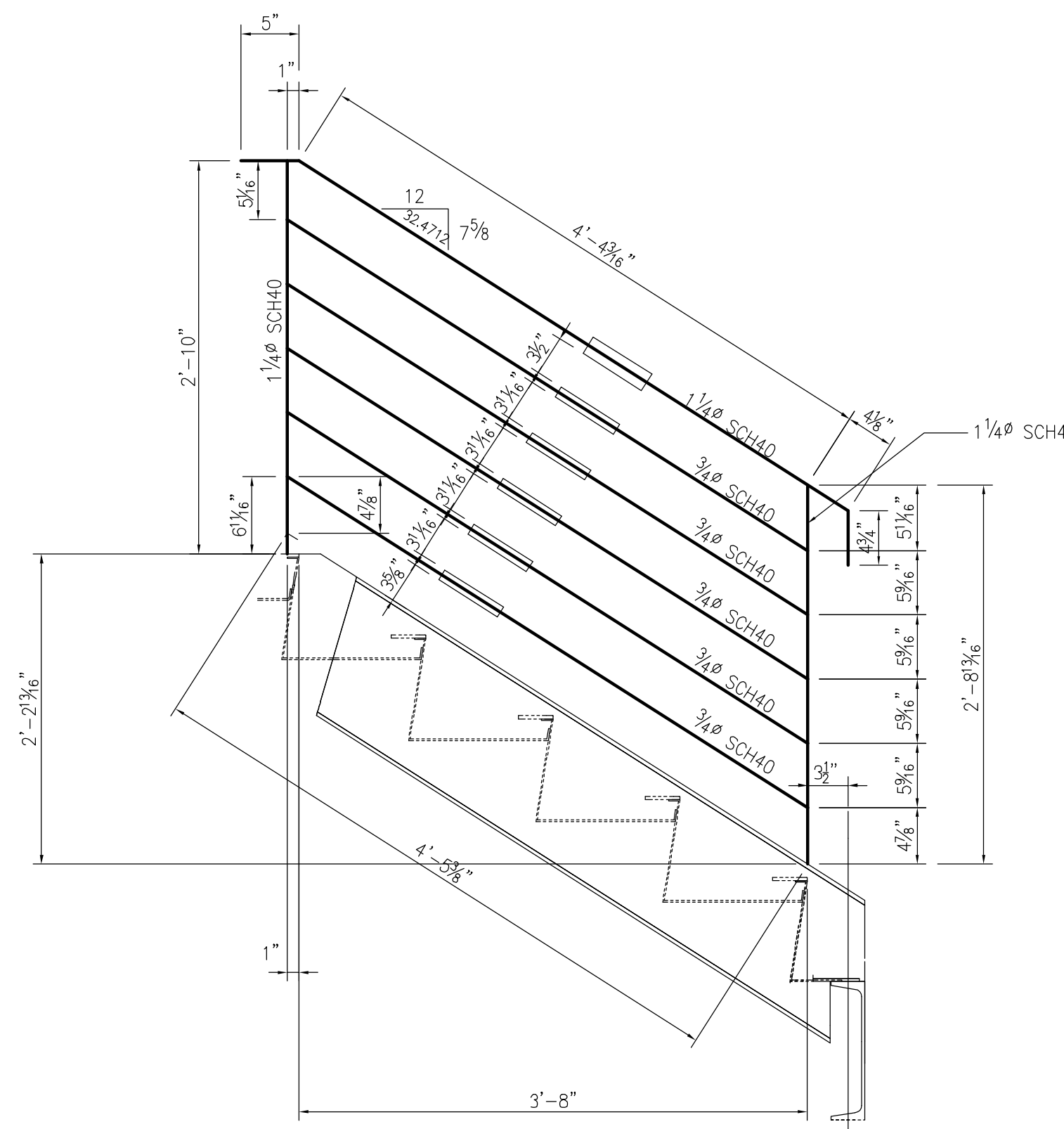
ONE HANDRAIL R708C



9 ELS M708F



ONE HANDRAIL R708B



ONE HANDRAIL R708D

BILL OF MATERIAL

QTY	Piece	QTY	Description	Length	Remarks	Weight
Total	Mark	UNIT				Unit
ONE	R708A	ONE	HANDRAIL			
LIN/FT	mc708		1 1/4" SCH40 PIPE	17	0	A53B 38.59
LIN/FT	md708		3/4" SCH40 PIPE	13	0	A53B 29.51
ONE	R708B	ONE	HANDRAIL			
LIN/FT	ma708		1 1/4" SCH40 PIPE	15	0	A53B 31.78
LIN/FT	mb708		3/4" SCH40 PIPE	30	0	A53B 25.5
ONE	R708C	ONE	HANDRAIL			
LIN/FT	me708		1 1/4" SCH40 PIPE	15	0	A53B 34.05
LIN/FT	mf708		3/4" SCH40 PIPE	22	0	A53B 18.7
ONE	R708D	ONE	HANDRAIL			
LIN/FT	mg708		1 1/4" SCH40 PIPE	12	0	A53B 27.24
LIN/FT	mh708		3/4" SCH40 PIPE	22	0	A53B 18.7
9	M708F	ONE	1 1/4" PIPE EL			

TOTAL WEIGHT: 224.07

DETAILING: FABRICATION TECHNICAL SERVICES, INC.
 JOB: 1128 1839 S. GREENSFERRY RD., COEUR D'ALENE, ID 83814
 (208) 457-8282 fax: (208) 457-8208

REF:

HOLES 13/16" DIA U.N.O. W.P. (TAILS)
 WELD 3/16 FILLET U.N.O. (E70XX)
 FINISH PER SPEC

WESTERN STATES STEEL & FAB, INC.

E. 1812 HOLYOKE
 SPOKANE, WASHINGTON 99217
 ph: (509) 489-8046 fax: (509) 489-3739

REVISIONS			PRODUCT		
NO.	DATE	BY	CHELAN COUNTY		
1	8-5	KB	316 BUILDING		
2			CONTRACTOR	DATE	CMR CHK KB
3			G.G.RICHARDSON INC.	JUNE 25 2004	
4			DESCRIPTION	JOB NO	903
5			SOUTH STAIR RAIL	ENG NO	708